

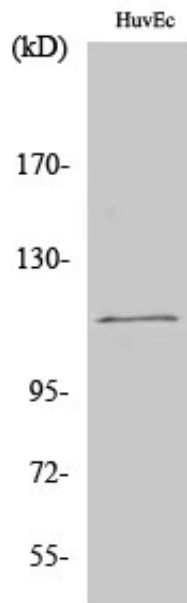
SEN7 Polyclonal Antibody

Catalog_no :	AT4241
Applications :	WB,IHC-p,ELISA
Reactivity :	Human,Mouse
Category :	抗原抗体
Size :	100µg/50µg/20µg
Gene_name :	SEN7
Protein_name :	Sentrin-specific protease 7
Humangene_id :	57337
Humanswissprot_no :	Q9BQF6
Mousegene_id :	66315
Mouseswissprot_no :	Q8BUH8
Immunogen :	The antiserum was produced against synthesized peptide derived from human SEN7. AA range:991-1040
Specificity :	SEN7 Polyclonal Antibody detects endogenous levels of SEN7 protein.
Formulation :	Liquid in PBS containing 50% glycerol, 0.5% BSA and 0.02% sodium azide.
Source :	Rabbit
Dilution :	Western Blot: 1/500 - 1/2000. Immunohistochemistry: 1/100 - 1/300. ELISA: 1/40000. Not yet tested in other applications.
Purification :	The antibody was affinity-purified from rabbit antiserum by affinity-chromatography using epitope-specific immunogen.
Concentration :	1 mg/ml
Storage_stability :	-20°C/1 year
Msds :	MSDS_Antibody.pdf
Other_name :	SEN7; KIAA1707; SSP2; SUSP2; Sentrin-specific protease 7; SUMO-1-specific protease 2; Sentrin/SUMO-specific protease SEN7
Molecular	112KD



Weight :

Product Images



Western Blot analysis of various cells using SENP7 Polyclonal Antibody cells nucleus extracted by Minute TM Cytoplasmic and Nuclear Fractionation kit (SC-003, Inventbiotech, MN, USA).