



SENP8 Polyclonal Antibody

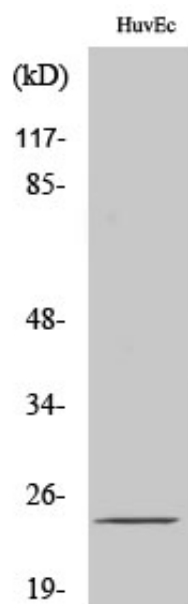
Catalog_no :	<u>AT4242</u>
Applications :	<u>WB,IHC-p,ELISA</u>
Reactivity :	<u>Human,Mouse,Rat</u>
Category :	<u>抗原抗体</u>
Size :	<u>100µg/50µg/20µg</u>
Gene_name :	<u>SENP8</u>
Protein_name :	<u>Sentrin-specific protease 8</u>
Humangene_id :	<u>123228</u>
Humanswissprot_no :	<u>Q96LD8</u>
Mousegene_id :	<u>71599</u>
Mouseswissprot_no :	<u>Q9D274</u>
Ratgene_id :	<u>315723</u>
Ratswissprot_no :	<u>Q5FVJ8</u>
Immunogen :	<u>The antiserum was produced against synthesized peptide derived from human SENP8. AA range:161-210</u>
Specificity :	<u>SENP8 Polyclonal Antibody detects endogenous levels of SENP8 protein.</u>
Formulation :	<u>Liquid in PBS containing 50% glycerol, 0.5% BSA and 0.02% sodium azide.</u>
Source :	<u>Rabbit</u>
Dilution :	<u>Western Blot: 1/500 - 1/2000. Immunohistochemistry: 1/100 - 1/300. ELISA: 1/10000. Not yet tested in other applications.</u>
Purification :	<u>The antibody was affinity-purified from rabbit antiserum by affinity-chromatography using epitope-specific immunogen.</u>
Concentration :	<u>1 mg/ml</u>
Storage_stability :	<u>-20°C/1 year</u>
Msds :	<u>MSDS_Antibody.pdf</u>



Other_name : SENp8; DEN1; NEDP1; PRSC2; FKSG8; Sentrin-specific protease 8; Deneddylase-1; NEDD8-specific protease 1; Protease; cysteine 2; Sentrin/SUMO-specific protease SENP8

Molecular Weight : 27KD

Product Images



Western Blot analysis of various cells using SENP8 Polyclonal Antibody