



Separase Polyclonal Antibody

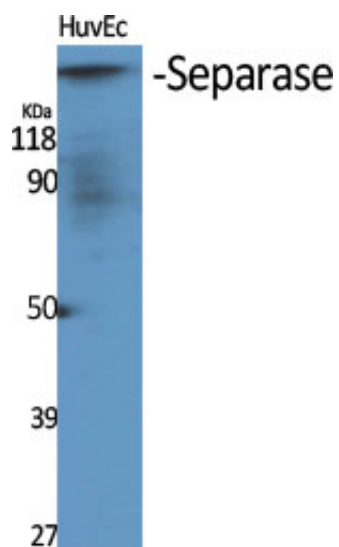
Catalog_no :	AT4243
Applications :	WB,IHC-p,IF,ELISA
Reactivity :	Human,Mouse
Category :	抗原抗体
Size :	100µg/50µg/20µg
Gene_name :	ESPL1
Protein_name :	Separin
Humangene_id :	9700
Humanswissprot_no :	Q14674
Mousegene_id :	105988
Mouseswissprot_no :	P60330
Immunogen :	The antiserum was produced against synthesized peptide derived from human SEPARASE. AA range:767-816
Specificity :	Separase Polyclonal Antibody detects endogenous levels of Separase protein.
Formulation :	Liquid in PBS containing 50% glycerol, 0.5% BSA and 0.02% sodium azide.
Source :	Rabbit
Dilution :	Western Blot: 1/500 - 1/2000. Immunohistochemistry: 1/100 - 1/300. Immunofluorescence: 1/200 - 1/1000. ELISA: 1/40000. Not yet tested in other applications.
Purification :	The antibody was affinity-purified from rabbit antiserum by affinity-chromatography using epitope-specific immunogen.
Concentration :	1 mg/ml
Storage_stability :	-20°C/1 year
Msds :	MSDS_Antibody.pdf
Other_name :	ESPL1; ESP1; KIAA0165; Separin; Caspase-like protein ESPL1; Extra spindle poles-like 1 protein; Separase



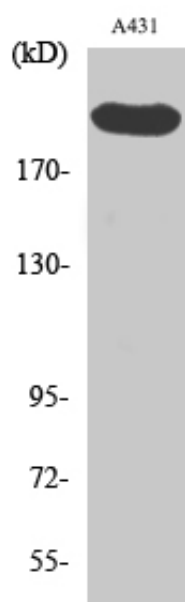
Molecular
Weight :

230KD

Product Images



Western Blot analysis of various cells using Separase Polyclonal Antibody diluted at 1 : 1000



Western Blot analysis of A431 cells using Separase Polyclonal Antibody diluted at 1 : 1000