

## Seprase Polyclonal Antibody

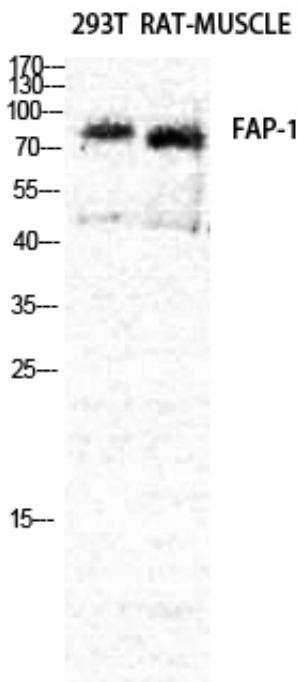
Catalog_no :	<u>AT4244</u>
Applications :	<u>WB,IHC-p,ELISA</u>
Reactivity :	<u>Human,Mouse,Rat</u>
Category :	<u>抗原抗体</u>
Size :	<u>100µg/50µg/20µg</u>
Gene_name :	<u>FAP</u>
Protein_name :	<u>Seprase</u>
Humangene_id :	<u><a href="#">2191</a></u>
Humanswissprot_no :	<u><a href="#">Q12884</a></u>
Mousegene_id :	<u><a href="#">14089</a></u>
Mouseswissprot_no :	<u><a href="#">P97321</a></u>
Immunogen :	<u>The antiserum was produced against synthesized peptide derived from human FAP-1. AA range:331-380</u>
Specificity :	<u>Seprase Polyclonal Antibody detects endogenous levels of Seprase protein.</u>
Formulation :	<u>Liquid in PBS containing 50% glycerol, 0.5% BSA and 0.02% sodium azide.</u>
Source :	<u>Rabbit</u>
Dilution :	<u>Western Blot: 1/500 - 1/2000. Immunohistochemistry: 1/100 - 1/300. ELISA: 1/10000. Not yet tested in other applications.</u>
Purification :	<u>The antibody was affinity-purified from rabbit antiserum by affinity-chromatography using epitope-specific immunogen.</u>
Concentration :	<u>1 mg/ml</u>
Storage_stability :	<u>-20°C/1 year</u>
Msds :	<u><a href="#">MSDS_Antibody.pdf</a></u>
Other_name :	<u>FAP; Seprase; 170 kDa melanoma membrane-bound gelatinase; Fibroblast activation protein alpha; Integral membrane serine protease</u>
Molecular	<u>90KD</u>



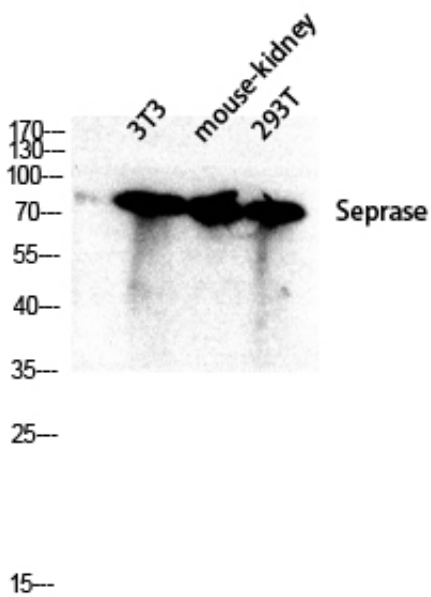
Weight :

---

## Product Images



Western Blot analysis of RAT-MUSCLE 293T cells using Seprase Polyclonal Antibody diluted at 1 : 2000



Western blot analysis of 3T3 mouse-kidney 293T lysis using Seprase antibody. Antibody was diluted at 1:2000