

Septin 3 Polyclonal Antibody

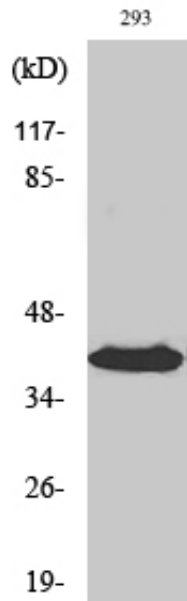
Catalog_no :	AT4248
Applications :	WB,ELISA
Reactivity :	Human,Mouse,Rat
Category :	抗原抗体
Size :	100µg/50µg/20µg
Gene_name :	SEPT3
Protein_name :	Neuronal-specific septin-3
Humangene_id :	55964
Humanswissprot_no :	Q9UH03
Mousegene_id :	24050
Mouseswissprot_no :	Q9Z1S5
Ratgene_id :	56003
Ratswissprot_no :	Q9WU34
Immunogen :	The antiserum was produced against synthesized peptide derived from human SEPT3. AA range:136-185
Specificity :	Septin 3 Polyclonal Antibody detects endogenous levels of Septin 3 protein.
Formulation :	Liquid in PBS containing 50% glycerol, 0.5% BSA and 0.02% sodium azide.
Source :	Rabbit
Dilution :	Western Blot: 1/500 - 1/2000. ELISA: 1/20000. Not yet tested in other applications.
Purification :	The antibody was affinity-purified from rabbit antiserum by affinity-chromatography using epitope-specific immunogen.
Concentration :	1 mg/ml
Storage_stability :	-20°C/1 year
Msds :	MSDS_Antibody.pdf



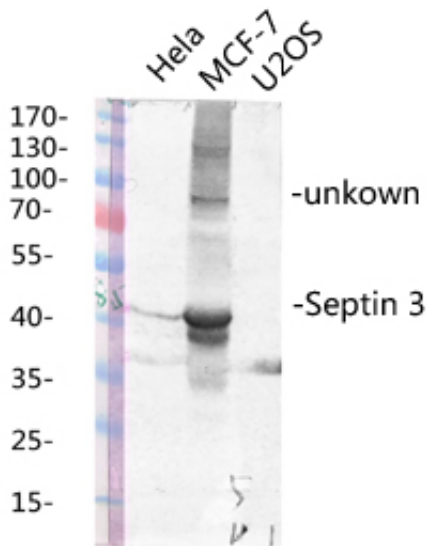
Other_name : SEPT3; SEP3; Neuronal-specific septin-3

Molecular Weight : 41KD

Product Images



Western Blot analysis of various cells using Septin 3 Polyclonal Antibody diluted at 1 : 1000



Western blot analysis of various lysis using Septin 3 Polyclonal Antibody diluted at 1 : 1000. Secondary antibody was diluted at 1:20000