

Septin 7 Polyclonal Antibody

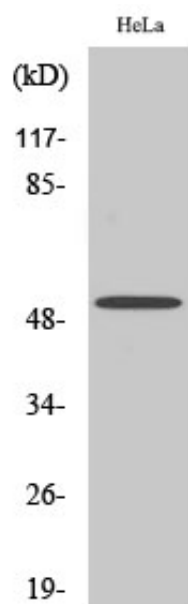
Catalog_no :	<u>AT4251</u>
Applications :	<u>WB,IHC-p,ELISA</u>
Reactivity :	<u>Human,Mouse,Rat</u>
Category :	<u>抗原抗体</u>
Size :	<u>100µg/50µg/20µg</u>
Gene_name :	<u>SEPT7</u>
Protein_name :	<u>Septin-7</u>
Humangene_id	<u>989</u>
:	<u></u>
Humanswissprot	<u>Q16181</u>
_no :	<u></u>
Mousegene_id :	<u>235072</u>
Mouseswissprot	<u>O55131</u>
_no :	<u></u>
Ratgene_id :	<u>64551</u>
Ratswissprot_no	<u>Q9WVC0</u>
:	<u></u>
Immunogen :	<u>The antiserum was produced against synthesized peptide derived from human SEPT7. AA range:350-399</u>
Specificity :	<u>Septin 7 Polyclonal Antibody detects endogenous levels of Septin 7 protein.</u>
Formulation :	<u>Liquid in PBS containing 50% glycerol, 0.5% BSA and 0.02% sodium azide.</u>
Source :	<u>Rabbit</u>
Dilution :	<u>Western Blot: 1/500 - 1/2000.IHC-p:1:50-300 ELISA: 1/20000. Not yet tested in other applications.</u>
Purification :	<u>The antibody was affinity-purified from rabbit antiserum by affinity-chromatography using epitope-specific immunogen.</u>
Concentration :	<u>1 mg/ml</u>
Storage_stability	<u>-20°C/1 year</u>
:	<u></u>
Msds :	<u>MSDS_Antibody.pdf</u>



Other_name : SEPT7; CDC10; Septin-7; CDC10 protein homolog

Molecular Weight : 48KD

Product Images



Western Blot analysis of various cells using Septin 7 Polyclonal Antibody