

## Septin 8 Polyclonal Antibody

Catalog_no :	AT4252
Applications :	WB,ELISA
Reactivity :	Human,Mouse,Rat
Category :	抗原抗体
Size :	100µg/50µg/20µg
Gene_name :	SEPT8
Protein_name :	Septin-8
Humangene_id :	<a href="#">23176</a>
Humanswissprot_no :	<a href="#">Q92599</a>
Mousegene_id :	<a href="#">20362</a>
Mouseswissprot_no :	<a href="#">Q8CHH9</a>
Ratswissprot_no :	<a href="#">B0BNF1</a>
Immunogen :	The antiserum was produced against synthesized peptide derived from human SEPT8. AA range:170-219
Specificity :	Septin 8 Polyclonal Antibody detects endogenous levels of Septin 8 protein.
Formulation :	Liquid in PBS containing 50% glycerol, 0.5% BSA and 0.02% sodium azide.
Source :	Rabbit
Dilution :	Western Blot: 1/500 - 1/2000. ELISA: 1/10000. Not yet tested in other applications.
Purification :	The antibody was affinity-purified from rabbit antiserum by affinity-chromatography using epitope-specific immunogen.
Concentration :	1 mg/ml
Storage_stability :	-20°C/1 year
Msds :	<a href="#">MSDS_Antibody.pdf</a>
Other_name :	SEPT8; KIAA0202; Septin-8

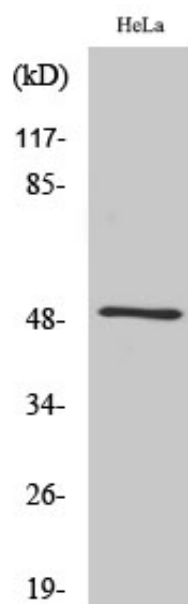


Molecular  
Weight :

50KD

---

## Product Images



Western Blot analysis of various cells using Septin 8 Polyclonal Antibody diluted at 1 : 2000