

SERCA1 Polyclonal Antibody

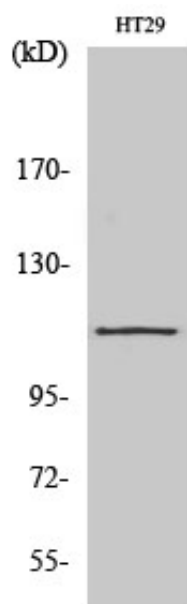
Catalog_no :	<u>AT4253</u>
Applications :	<u>WB,IHC-p,ELISA</u>
Reactivity :	<u>Human,Mouse,Rat</u>
Category :	<u>抗原抗体</u>
Size :	<u>100µg/50µg/20µg</u>
Gene_name :	<u>ATP2A1</u>
Protein_name :	<u>Sarcoplasmic/endoplasmic reticulum calcium ATPase 1</u>
Humangene_id	<u>487</u>
:	<u></u>
Humanswissprot	<u>O14983</u>
_no :	<u></u>
Mousegene_id :	<u>11937</u>
Mouseswissprot	<u>Q8R429</u>
_no :	<u></u>
Ratgene_id :	<u>116601</u>
Ratswissprot_no	<u>Q64578</u>
:	<u></u>
Immunogen :	<u>The antiserum was produced against synthesized peptide derived from human ATP2A1. AA range:548-597</u>
Specificity :	<u>SERCA1 Polyclonal Antibody detects endogenous levels of SERCA1 protein.</u>
Formulation :	<u>Liquid in PBS containing 50% glycerol, 0.5% BSA and 0.02% sodium azide.</u>
Source :	<u>Rabbit</u>
Dilution :	<u>Western Blot: 1/500 - 1/2000. Immunohistochemistry: 1/100 - 1/300. ELISA: 1/10000. Not yet tested in other applications.</u>
Purification :	<u>The antibody was affinity-purified from rabbit antiserum by affinity-chromatography using epitope-specific immunogen.</u>
Concentration :	<u>1 mg/ml</u>
Storage_stability	<u>-20°C/1 year</u>
:	<u></u>
Msds :	<u>MSDS_Antibody.pdf</u>



Other_name : ATP2A1; Sarcoplasmic/endoplasmic reticulum calcium ATPase 1; SERCA1; SR Ca(2+)-ATPase 1; Calcium pump 1; Calcium-transporting ATPase sarcoplasmic reticulum type; fast twitch skeletal muscle isoform; Endoplasmic reticulum class 1/2 Ca(2+) AT

Molecular Weight : 100KD

Product Images



Western Blot analysis of various cells using SERCA1 Polyclonal Antibody diluted at 1 : 2000