



Serinc1 Polyclonal Antibody

Catalog_no :	AT4255
Applications :	WB,IHC-p,IF,ELISA
Reactivity :	Human,Mouse,Rat
Category :	抗原抗体
Size :	100µg/50µg/20µg
Gene_name :	SERINC1
Protein_name :	Serine incorporator 1
Humangene_id :	57515
Humanswissprot_no :	Q9NRX5
Mousegene_id :	56442
Mouseswissprot_no :	Q9QZI8
Ratgene_id :	294421
Ratswissprot_no :	Q7TNK0
Immunogen :	The antiserum was produced against synthesized peptide derived from human SERC1. AA range:381-430
Specificity :	Serinc1 Polyclonal Antibody detects endogenous levels of Serinc1 protein.
Formulation :	Liquid in PBS containing 50% glycerol, 0.5% BSA and 0.02% sodium azide.
Source :	Rabbit
Dilution :	Western Blot: 1/500 - 1/2000. Immunohistochemistry: 1/100 - 1/300. Immunofluorescence: 1/200 - 1/1000. ELISA: 1/20000. Not yet tested in other applications.
Purification :	The antibody was affinity-purified from rabbit antiserum by affinity-chromatography using epitope-specific immunogen.
Concentration :	1 mg/ml
Storage_stability :	-20°C/1 year

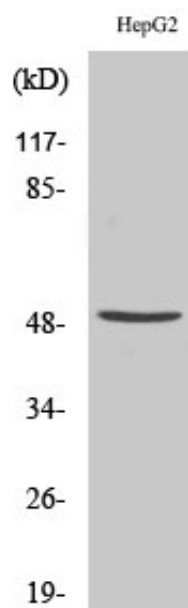


Msd : MSDS_Antibody.pdf

Other_name : SERINC1; KIAA1253; TDE1L; TDE2; Serine incorporator 1; Tumor differentially expressed protein 1-like; Tumor differentially expressed protein 2

Molecular Weight : 48KD

Product Images



Western Blot analysis of various cells using Serinc1 Polyclonal Antibody