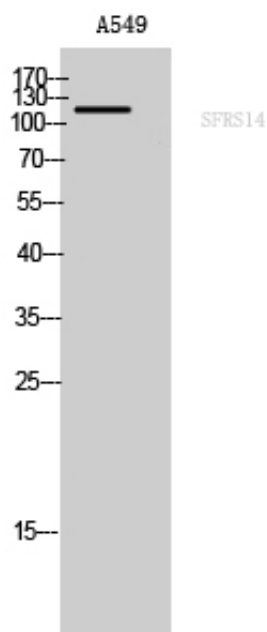




## SFRS14 Polyclonal Antibody

Catalog_no :	AT4264
Applications :	WB,ELISA
Reactivity :	Human
Category :	抗原抗体
Size :	100µg/50µg/20µg
Gene_name :	SUGP2
Protein_name :	SURP and G-patch domain-containing protein 2
Humangene_id :	<a href="#">10147</a>
Humanswissprot_no :	<a href="#">Q8IX01</a>
Immunogen :	Synthesized peptide derived from SFRS14 . at AA range: 260-340
Specificity :	SFRS14 Polyclonal Antibody detects endogenous levels of SFRS14 protein.
Formulation :	Liquid in PBS containing 50% glycerol, 0.5% BSA and 0.02% sodium azide.
Source :	Rabbit
Dilution :	Western Blot: 1/500 - 1/2000. ELISA: 1/5000. Not yet tested in other applications.
Purification :	The antibody was affinity-purified from rabbit antiserum by affinity-chromatography using epitope-specific immunogen.
Concentration :	1 mg/ml
Storage_stability :	-20°C/1 year
Msds :	MSDS_Antibody.pdf
Other_name :	SUGP2; KIAA0365; SFRS14; SURP and G-patch domain-containing protein 2; Arginine/serine-rich-splicing factor 14; Splicing factor; arginine/serine-rich 14
Molecular Weight :	120KD

## Product Images



Western Blot analysis of A549 cells using SFRS14 Polyclonal Antibody cells nucleus extracted by Minute TM Cytoplasmic and Nuclear Fractionation kit (SC-003, Inventbiotech, MN, USA).