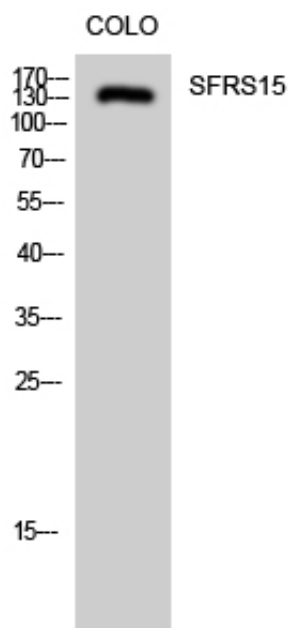




SFRS15 Polyclonal Antibody

Catalog_no :	AT4265
Applications :	WB,IHC-p,ELISA
Reactivity :	Human,Mouse,Rat
Category :	抗原抗体
Size :	100µg/50µg/20µg
Gene_name :	SCAF4
Protein_name :	Splicing factor arginine/serine-rich 15
Humangene_id :	57466
Humanswissprot_no :	O95104
Ratswissprot_no :	Q63627
Immunogen :	The antiserum was produced against synthesized peptide derived from human SFRS15. AA range:601-650
Specificity :	SFRS15 Polyclonal Antibody detects endogenous levels of SFRS15 protein.
Formulation :	Liquid in PBS containing 50% glycerol, 0.5% BSA and 0.02% sodium azide.
Source :	Rabbit
Dilution :	Western Blot: 1/500 - 1/2000. Immunohistochemistry: 1/100 - 1/300. ELISA: 1/40000. Not yet tested in other applications.
Purification :	The antibody was affinity-purified from rabbit antiserum by affinity-chromatography using epitope-specific immunogen.
Concentration :	1 mg/ml
Storage_stability :	-20°C/1 year
Msds :	MSDS_Antibody.pdf
Other_name :	SCAF4; KIAA1172; SFRS15; Splicing factor; arginine/serine-rich 15; CTD-binding SR-like protein RA4; SR-related and CTD-associated factor 4
Molecular Weight :	140KD

Product Images



Western Blot analysis of COLO cells using SFRS15 Polyclonal Antibody diluted at 1 : 2000 cells nucleus extracted by Minute TM Cytoplasmic and Nuclear Fractionation kit (SC-003, Inventbiotech, MN, USA).