

SGK1 Polyclonal Antibody

Catalog_no :	AT4268
Applications :	IF,WB,IHC-p,ELISA
Reactivity :	Human,Mouse,Rat
Category :	抗原抗体
Size :	100µg/50µg/20µg
Gene_name :	SGK1
Protein_name :	Serine/threonine-protein kinase Sgk1
Humangene_id :	6446
Humanswissprot_no :	O00141
Mousegene_id :	20393
Mouseswissprot_no :	Q9WVC6
Ratswissprot_no :	Q06226
Immunogen :	The antiserum was produced against synthesized peptide derived from human SGK. AA range:381-430
Specificity :	SGK1 Polyclonal Antibody detects endogenous levels of SGK1 protein.
Formulation :	Liquid in PBS containing 50% glycerol, 0.5% BSA and 0.02% sodium azide.
Source :	Rabbit
Dilution :	IF: 1:50-200 Western Blot: 1/500 - 1/2000. Immunohistochemistry: 1/100 - 1/300. ELISA: 1/5000. Not yet tested in other applications.
Purification :	The antibody was affinity-purified from rabbit antiserum by affinity-chromatography using epitope-specific immunogen.
Concentration :	1 mg/ml
Storage_stability :	-20°C/1 year
Msds :	MSDS_Antibody.pdf
Other_name :	SGK1; SGK; Serine/threonine-protein kinase Sgk1; Serum/glucocorticoid-regulated

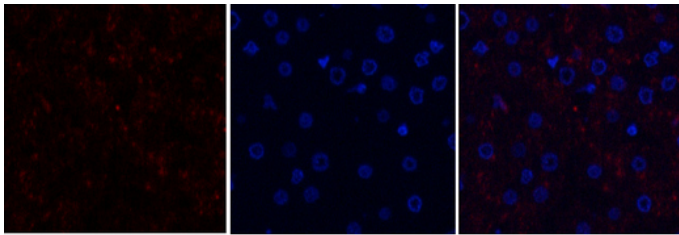


kinase 1

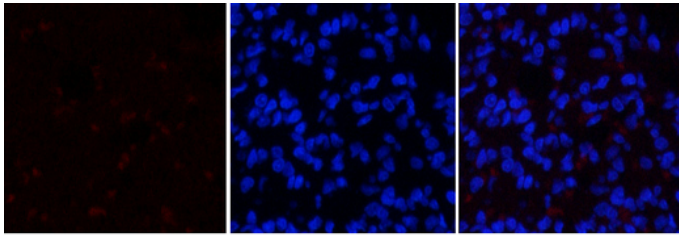
Molecular
Weight :

57KD

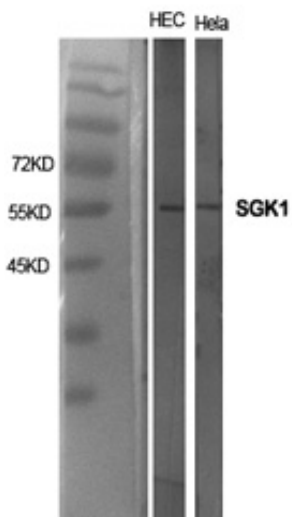
Product Images



Immunofluorescence analysis of human-liver tissue. 1,SGK1 Polyclonal Antibody(red) was diluted at 1:200(4°C,overnight). 2, Cy3 labeled Secondary antibody was diluted at 1:300(room temperature, 50min).3, Picture B: DAPI(blue) 10min. Picture A:Target. Picture B: DAPI. Picture C: merge of A+B



Immunofluorescence analysis of rat-lung tissue. 1,SGK1 Polyclonal Antibody(red) was diluted at 1:200(4°C,overnight). 2, Cy3 labeled Secondary antibody was diluted at 1:300(room temperature, 50min).3, Picture B: DAPI(blue) 10min. Picture A:Target. Picture B: DAPI. Picture C: merge of A+B



Western Blot analysis of various cells using SGK1 Polyclonal Antibody diluted at 1 : 1000