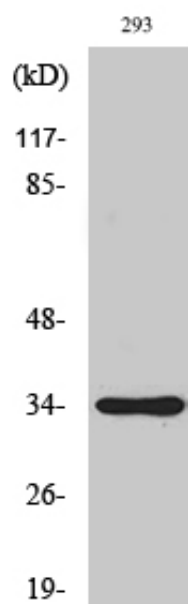


SH2D5 Polyclonal Antibody

Catalog_no :	AT4278
Applications :	WB,ELISA
Reactivity :	Human,Mouse,Rat
Category :	抗原抗体
Size :	100µg/50µg/20µg
Gene_name :	SH2D5
Protein_name :	SH2 domain-containing protein 5
Humangene_id :	400745
Humanswissprot_no :	Q6ZV89
Mouseswissprot_no :	Q8JZW5
Immunogen :	The antiserum was produced against synthesized peptide derived from human SH2D5. AA range:281-330
Specificity :	SH2D5 Polyclonal Antibody detects endogenous levels of SH2D5 protein.
Formulation :	Liquid in PBS containing 50% glycerol, 0.5% BSA and 0.02% sodium azide.
Source :	Rabbit
Dilution :	Western Blot: 1/500 - 1/2000. ELISA: 1/20000. Not yet tested in other applications.
Purification :	The antibody was affinity-purified from rabbit antiserum by affinity-chromatography using epitope-specific immunogen.
Concentration :	1 mg/ml
Storage_stability :	-20°C/1 year
Msds :	MSDS_Antibody.pdf
Other_name :	SH2D5; SH2 domain-containing protein 5
Molecular Weight :	35KD

Product Images



Western Blot analysis of various cells using SH2D5 Polyclonal Antibody