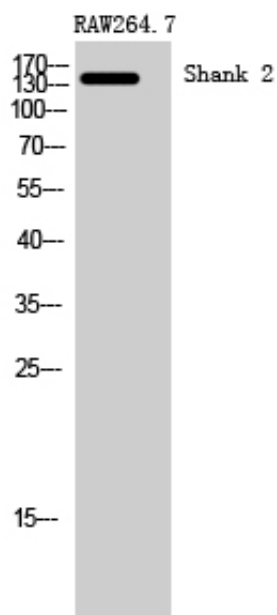


Shank 2 Polyclonal Antibody

Catalog_no :	AT4283
Applications :	WB,ELISA
Reactivity :	Human
Category :	抗原抗体
Size :	100µg/50µg/20µg
Gene_name :	SHANK2
Protein_name :	SH3 and multiple ankyrin repeat domains protein 2
Humangene_id :	22941
Humanswissprot_no :	Q9UPX8
Immunogen :	The antiserum was produced against synthesized peptide derived from human SHANK2. AA range:331-380
Specificity :	Shank 2 Polyclonal Antibody detects endogenous levels of Shank 2 protein.
Formulation :	Liquid in PBS containing 50% glycerol, 0.5% BSA and 0.02% sodium azide.
Source :	Rabbit
Dilution :	Western Blot: 1/500 - 1/2000. ELISA: 1/20000. Not yet tested in other applications.
Purification :	The antibody was affinity-purified from rabbit antiserum by affinity-chromatography using epitope-specific immunogen.
Concentration :	1 mg/ml
Storage_stability :	-20°C/1 year
Msds :	MSDS_Antibody.pdf
Other_name :	SHANK2; CORTBP1; KIAA1022; SH3 and multiple ankyrin repeat domains protein 2; Shank2; Cortactin-binding protein 1; CortBP1; Proline-rich synapse-associated protein 1
Molecular Weight :	135KD

Product Images



Western Blot analysis of RAW264.7 cells using Shank 2 Polyclonal Antibody