

Shc Polyclonal Antibody

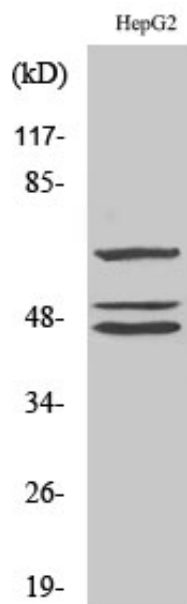
Catalog_no :	<u>AT4287</u>
Applications :	<u>WB,IHC-p,ELISA</u>
Reactivity :	<u>Human,Mouse,Rat</u>
Category :	<u>抗原抗体</u>
Size :	<u>100µg/50µg/20µg</u>
Gene_name :	<u>SHC1</u>
Protein_name :	<u>SHC-transforming protein 1</u>
Humangene_id :	<u>6464</u>
Humanswissprot_no :	<u>P29353</u>
Mousegene_id :	<u>20416</u>
Mouseswissprot_no :	<u>P98083</u>
Ratgene_id :	<u>85385</u>
Ratswissprot_no :	<u>Q5M824</u>
Immunogen :	<u>The antiserum was produced against synthesized peptide derived from human Shc. AA range:393-442</u>
Specificity :	<u>Shc Polyclonal Antibody detects endogenous levels of Shc protein.</u>
Formulation :	<u>Liquid in PBS containing 50% glycerol, 0.5% BSA and 0.02% sodium azide.</u>
Source :	<u>Rabbit</u>
Dilution :	<u>Western Blot: 1/500 - 1/2000. Immunohistochemistry: 1/100 - 1/300. ELISA: 1/20000. Not yet tested in other applications.</u>
Purification :	<u>The antibody was affinity-purified from rabbit antiserum by affinity-chromatography using epitope-specific immunogen.</u>
Concentration :	<u>1 mg/ml</u>
Storage_stability :	<u>-20°C/1 year</u>
Msds :	<u>MSDS_Antibody.pdf</u>



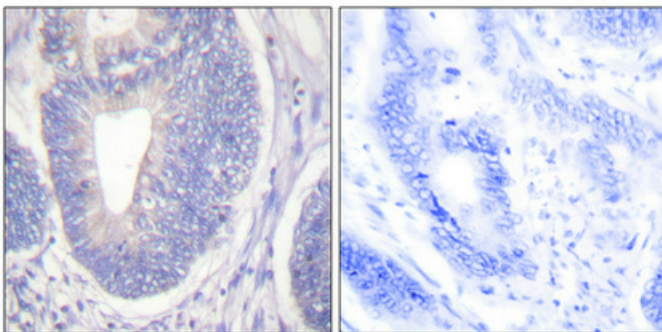
Other_name : SHC1; SHC; SHCA; SHC-transforming protein 1; SHC-transforming protein 3; SHC-transforming protein A; Src homology 2 domain-containing-transforming protein C1; SH2 domain protein C1

Molecular Weight : 66(p66 isoform), 52(p52 isoform), 46(p46 isoform)

Product Images



Western Blot analysis of various cells using Shc Polyclonal Antibody



Immunohistochemical analysis of paraffin-embedded Human colon cancer. Antibody was diluted at 1:100(4°, overnight). High-pressure and temperature Tris-EDTA, pH8.0 was used for antigen retrieval. Negative control (right) obtained from antibody was pre-absorbed by immunogen peptide.