

Siah-1/2 Polyclonal Antibody

Catalog_no :	AT4296
Applications :	WB,IHC-p,IF,ELISA
Reactivity :	Human,Mouse,Rat
Category :	抗原抗体
Size :	100µg/50µg/20µg
Gene_name :	SIAH1/SIAH2
Protein_name :	E3 ubiquitin-protein ligase SIAH1/2
Humangene_id :	6477/6478
Humanswissprot_no :	Q8IUQ4/O43255
Mousegene_id :	20439
Ratgene_id :	140941/140593
Ratswissprot_no :	Q920M9/Q8R4T2
Immunogen :	The antiserum was produced against synthesized peptide derived from human SIAH1. AA range:181-230
Specificity :	Siah-1/2 Polyclonal Antibody detects endogenous levels of Siah-1/2 protein.
Formulation :	Liquid in PBS containing 50% glycerol, 0.5% BSA and 0.02% sodium azide.
Source :	Rabbit
Dilution :	Western Blot: 1/500 - 1/2000. Immunohistochemistry: 1/100 - 1/300. Immunofluorescence: 1/200 - 1/1000. ELISA: 1/10000. Not yet tested in other applications.
Purification :	The antibody was affinity-purified from rabbit antiserum by affinity-chromatography using epitope-specific immunogen.
Concentration :	1 mg/ml
Storage_stability :	-20°C/1 year
Msds :	MSDS_Antibody.pdf
Other_name :	SIAH1; HUMSIAH; E3 ubiquitin-protein ligase SIAH1; Seven in absentia homolog 1;

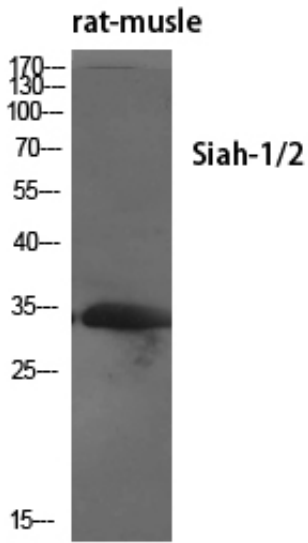


Siah-1; Siah-1a; SIAH2; E3 ubiquitin-protein ligase SIAH2; Seven in absentia homolog 2; Siah-2; hSiah2

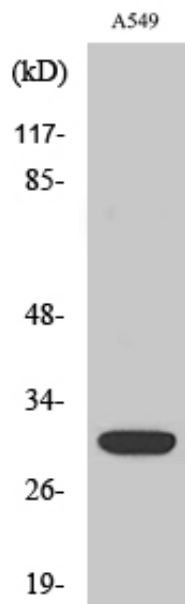
Molecular
Weight :

34KD

Product Images



Western Blot analysis of various cells using Siah-1/2
Polyclonal Antibody diluted at 1 : 500



Western Blot analysis of HeLa cells using Siah-1/2
Polyclonal Antibody diluted at 1 : 500