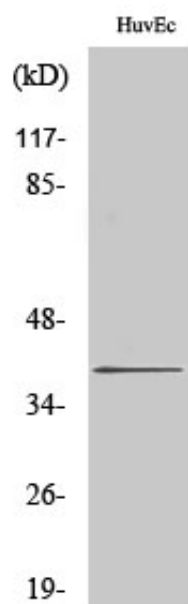




Sideroflexin-4 Polyclonal Antibody

Catalog_no :	AT4298
Applications :	WB,IF,ELISA
Reactivity :	Human
Category :	抗原抗体
Size :	100µg/50µg/20µg
Gene_name :	SFXN4
Protein_name :	Sideroflexin-4
Humangene_id :	119559
Humanswissprot_no :	Q6P4A7
Immunogen :	The antiserum was produced against synthesized peptide derived from human SFXN4. AA range:1-50
Specificity :	Sideroflexin-4 Polyclonal Antibody detects endogenous levels of Sideroflexin-4 protein.
Formulation :	Liquid in PBS containing 50% glycerol, 0.5% BSA and 0.02% sodium azide.
Source :	Rabbit
Dilution :	Western Blot: 1/500 - 1/2000. Immunofluorescence: 1/200 - 1/1000. ELISA: 1/20000. Not yet tested in other applications.
Purification :	The antibody was affinity-purified from rabbit antiserum by affinity-chromatography using epitope-specific immunogen.
Concentration :	1 mg/ml
Storage_stability :	-20°C/1 year
Msds :	MSDS_Antibody.pdf
Other_name :	SFXN4; BCRM1; Sideroflexin-4; Breast cancer resistance marker 1
Molecular Weight :	37KD

Product Images



Western Blot analysis of various cells using
Sideroflexin-4 Polyclonal Antibody