



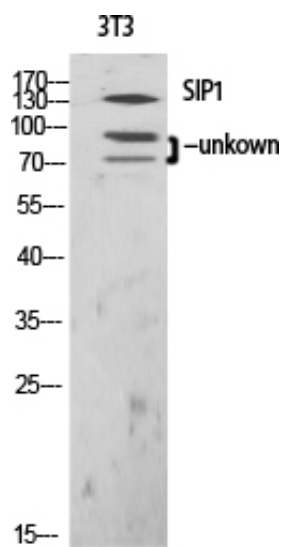
SIP1 Polyclonal Antibody

Catalog_no :	AT4300
Applications :	WB,IHC-p,ELISA
Reactivity :	Human,Mouse,Rat
Category :	抗原抗体
Size :	100µg/50µg/20µg
Gene_name :	ZEB2
Protein_name :	Zinc finger E-box-binding homeobox 2
Humangene_id :	9839
Humanswissprot_no :	O60315
Mousegene_id :	24136
Mouseswissprot_no :	Q9R0G7
Immunogen :	The antiserum was produced against synthesized peptide derived from human ZEB2. AA range:71-120
Specificity :	SIP1 Polyclonal Antibody detects endogenous levels of SIP1 protein.
Formulation :	Liquid in PBS containing 50% glycerol, 0.5% BSA and 0.02% sodium azide.
Source :	Rabbit
Dilution :	Western Blot: 1/500 - 1/2000. Immunohistochemistry: 1/100 - 1/300. ELISA: 1/10000. Not yet tested in other applications.
Purification :	The antibody was affinity-purified from rabbit antiserum by affinity-chromatography using epitope-specific immunogen.
Concentration :	1 mg/ml
Storage_stability :	-20°C/1 year
Msds :	MSDS_Antibody.pdf
Other_name :	ZEB2; KIAA0569; SIP1; ZFHX1B; ZFX1B; HRIHFB2411; Zinc finger E-box-binding homeobox 2; Smad-interacting protein 1; SMADIP1; Zinc finger homeobox protein 1b
Molecular	157KD



Weight :

Product Images



Western Blot analysis of various cells using SIP1 Polyclonal Antibody diluted at 1 : 1000 cells nucleus extracted by Minute TM Cytoplasmic and Nuclear Fractionation kit (SC-003, Inventbiotech, MN, USA).