

SIRP- α 1 Polyclonal Antibody

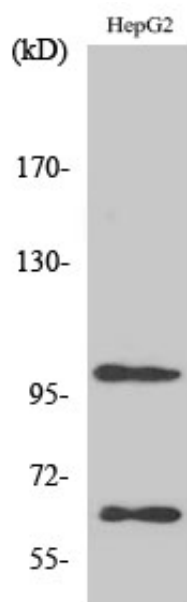
Catalog_no :	<u>AT4301</u>
Applications :	<u>WB,IHC-p,ELISA</u>
Reactivity :	<u>Human,Mouse,Rat</u>
Category :	<u>抗原抗体</u>
Size :	<u>100μg/50μg/20μg</u>
Gene_name :	<u>SIRPA</u>
Protein_name :	<u>Tyrosine-protein phosphatase non-receptor type substrate 1</u>
Humangene_id :	<u>140885</u>
Humanswissprot_no :	<u>P78324</u>
Mousegene_id :	<u>19261</u>
Mouseswissprot_no :	<u>P97797</u>
Ratgene_id :	<u>25528</u>
Ratswissprot_no :	<u>P97710</u>
Immunogen :	<u>The antiserum was produced against synthesized peptide derived from human Sirp alpha1. AA range:451-500</u>
Specificity :	<u>SIRP-α1 Polyclonal Antibody detects endogenous levels of SIRP-α1 protein.</u>
Formulation :	<u>Liquid in PBS containing 50% glycerol, 0.5% BSA and 0.02% sodium azide.</u>
Source :	<u>Rabbit</u>
Dilution :	<u>Western Blot: 1/500 - 1/2000. Immunohistochemistry: 1/100 - 1/300. ELISA: 1/20000. Not yet tested in other applications.</u>
Purification :	<u>The antibody was affinity-purified from rabbit antiserum by affinity-chromatography using epitope-specific immunogen.</u>
Concentration :	<u>1 mg/ml</u>
Storage_stability :	<u>-20°C/1 year</u>
Msds :	<u>MSDS_Antibody.pdf</u>



Other_name : SIRPA; BIT; MFR; MYD1; PTPNS1; SHPS1; SIRP; Tyrosine-protein phosphatase non-receptor type substrate 1; SHP substrate 1; SHPS-1; Brain Ig-like molecule with tyrosine-based activation motifs; Bit; CD172 antigen-like family member A; Inhibito

Molecular Weight : 55KD

Product Images



Western Blot analysis of various cells using SIRP- α 1 Polyclonal Antibody