

SIRT2 Polyclonal Antibody

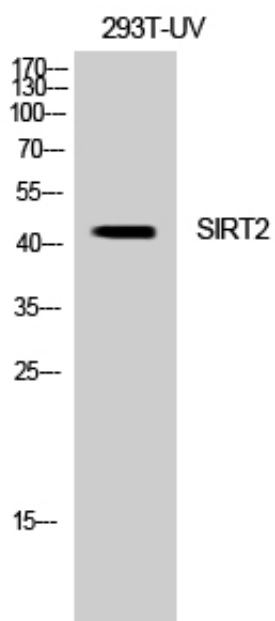
Catalog_no :	AT4303
Applications :	WB,ELISA
Reactivity :	Human,Mouse,Rat
Category :	抗原抗体
Size :	100µg/50µg/20µg
Gene_name :	SIRT2
Protein_name :	NAD-dependent protein deacetylase sirtuin-2
Humangene_id :	22933
Humanswissprot_no :	Q8IXJ6
Mousegene_id :	64383
Mouseswissprot_no :	Q8VDQ8
Ratgene_id :	361532
Ratswissprot_no :	Q5RJQ4
Immunogen :	The antiserum was produced against synthesized peptide derived from human SIRT2. AA range:321-370
Specificity :	SIRT2 Polyclonal Antibody detects endogenous levels of SIRT2 protein.
Formulation :	Liquid in PBS containing 50% glycerol, 0.5% BSA and 0.02% sodium azide.
Source :	Rabbit
Dilution :	Western Blot: 1/500 - 1/2000. ELISA: 1/5000. Not yet tested in other applications.
Purification :	The antibody was affinity-purified from rabbit antiserum by affinity-chromatography using epitope-specific immunogen.
Concentration :	1 mg/ml
Storage_stability :	-20°C/1 year
Msds :	MSDS_Antibody.pdf



Other_name : SIRT2; SIR2L; SIR2L2; NAD-dependent protein deacetylase sirtuin-2; Regulatory protein SIR2 homolog 2; SIR2-like protein 2

Molecular Weight : 43KD

Product Images



Western Blot analysis of 293 cells using SIRT2 Polyclonal Antibody diluted at 1 : 1000