



## Six5 Polyclonal Antibody

Catalog_no :	<u>AT4308</u>
Applications :	<u>WB,ELISA</u>
Reactivity :	<u>Human,Mouse</u>
Category :	<u>抗原抗体</u>
Size :	<u>100µg/50µg/20µg</u>
Gene_name :	<u>SIX5</u>
Protein_name :	<u>Homeobox protein SIX5</u>
Humangene_id :	<u><a href="#">147912</a></u>
Humanswissprot_no :	<u><a href="#">Q8N196</a></u>
Mousegene_id :	<u><a href="#">20475</a></u>
Mouseswissprot_no :	<u><a href="#">P70178</a></u>
Immunogen :	<u>The antiserum was produced against synthesized peptide derived from human SIX5. AA range:201-250</u>
Specificity :	<u>Six5 Polyclonal Antibody detects endogenous levels of Six5 protein.</u>
Formulation :	<u>Liquid in PBS containing 50% glycerol, 0.5% BSA and 0.02% sodium azide.</u>
Source :	<u>Rabbit</u>
Dilution :	<u>Western Blot: 1/500 - 1/2000. ELISA: 1/40000. Not yet tested in other applications.</u>
Purification :	<u>The antibody was affinity-purified from rabbit antiserum by affinity-chromatography using epitope-specific immunogen.</u>
Concentration :	<u>1 mg/ml</u>
Storage_stability :	<u>-20°C/1 year</u>
Msds :	<u><a href="#">MSDS_Antibody.pdf</a></u>
Other_name :	<u>SIX5; DMAHP; Homeobox protein SIX5; DM locus-associated homeodomain protein; Sine oculis homeobox homolog 5</u>
Molecular Weight :	<u>75KD</u>

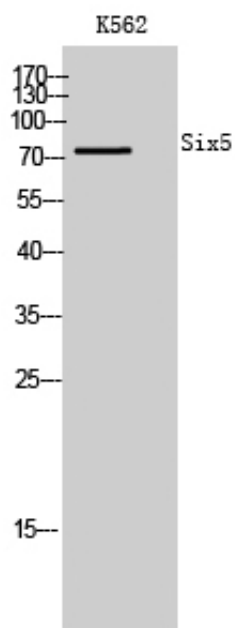


**专注二抗产品**

Biodragon旗下品牌

---

## Product Images



Western Blot analysis of K562 cells using Six5 Polyclonal Antibody