

## Skp1 p19 Polyclonal Antibody

Catalog_no :	AT4310
Applications :	WB,IHC-p,ELISA
Reactivity :	Human,Mouse,Rat,Monkey
Category :	抗原抗体
Size :	100µg/50µg/20µg
Gene_name :	SKP1
Protein_name :	S-phase kinase-associated protein 1
Humangene_id :	<a href="#">6500</a>
Humanswissprot_no :	<a href="#">P63208</a>
Mousegene_id :	<a href="#">21402</a>
Mouseswissprot_no :	<a href="#">Q9WTX5</a>
Ratgene_id :	<a href="#">287280</a>
Ratswissprot_no :	<a href="#">Q6PEC4</a>
Immunogen :	The antiserum was produced against synthesized peptide derived from human SKP1A/p19. AA range:41-90
Specificity :	Skp1 p19 Polyclonal Antibody detects endogenous levels of Skp1 p19 protein.
Formulation :	Liquid in PBS containing 50% glycerol, 0.5% BSA and 0.02% sodium azide.
Source :	Rabbit
Dilution :	Western Blot: 1/500 - 1/2000. Immunohistochemistry: 1/100 - 1/300. ELISA: 1/5000. Not yet tested in other applications.
Purification :	The antibody was affinity-purified from rabbit antiserum by affinity-chromatography using epitope-specific immunogen.
Concentration :	1 mg/ml
Storage_stability :	-20°C/1 year
Msds :	MSDS_Antibody.pdf



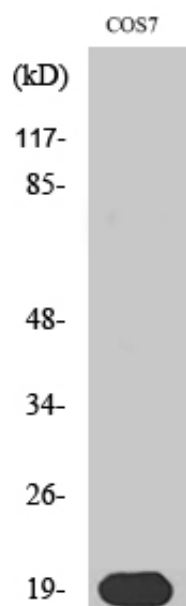
Other\_name : SKP1; EMC19; OCP2; SKP1A; TCEB1L; S-phase kinase-associated protein 1; Cyclin-A/CDK2-associated protein p19; Organ of Corti protein 2; OCP-2; Organ of Corti protein II; OCP-II; RNA polymerase II elongation factor-like protein; SIII; Transcr

---

Molecular Weight : 19KD

---

## Product Images



Western Blot analysis of various cells using Skp1 p19 Polyclonal Antibody