

## SLC4A8/10 Polyclonal Antibody

Catalog_no :	<u>AT4316</u>
Applications :	<u>WB,IHC-p,ELISA</u>
Reactivity :	<u>Human,Mouse,Rat</u>
Category :	<u>抗原抗体</u>
Size :	<u>100µg/50µg/20µg</u>
Gene_name :	<u>SLC4A8/SLC4A10</u>
Protein_name :	<u>Electroneutral sodium bicarbonate exchanger 1/Sodium-driven chloride bicarbonate exchanger</u>
Humangene_id :	<u><a href="#">57282/9498</a></u>
Humanswissprot_no :	<u><a href="#">Q2Y0W8/Q6U841</a></u>
Mousegene_id :	<u><a href="#">59033/94229</a></u>
Ratgene_id :	<u><a href="#">315311/295645</a></u>
Ratswissprot_no :	<u><a href="#">Q6RVG2/Q80ZA5</a></u>
Immunogen :	<u>The antiserum was produced against synthesized peptide derived from human SLC4A8/10. AA range:411-460</u>
Specificity :	<u>SLC4A8/10 Polyclonal Antibody detects endogenous levels of SLC4A8/10 protein.</u>
Formulation :	<u>Liquid in PBS containing 50% glycerol, 0.5% BSA and 0.02% sodium azide.</u>
Source :	<u>Rabbit</u>
Dilution :	<u>Western Blot: 1/500 - 1/2000. Immunohistochemistry: 1/100 - 1/300. ELISA: 1/40000. Not yet tested in other applications.</u>
Purification :	<u>The antibody was affinity-purified from rabbit antiserum by affinity-chromatography using epitope-specific immunogen.</u>
Concentration :	<u>1 mg/ml</u>
Storage_stability :	<u>-20°C/1 year</u>
Msds :	<u>MSDS_Antibody.pdf</u>
Other_name :	<u>SLC4A8; KIAA0739; NBC; NBC3; NDCBE1; Electroneutral sodium bicarbonate exchanger</u>



1; Electroneutral Na(+)-driven Cl-HCO<sub>3</sub> exchanger; Solute carrier family 4 member 8; k-NBC3; SLC4A10; NCBE; Sodium-driven chloride bicarbonate exchanger; Solute

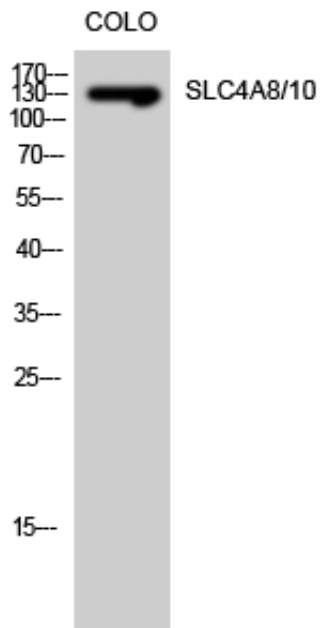
---

Molecular  
Weight :

140KD

---

## Product Images



Western Blot analysis of COLO cells using SLC4A8/10  
Polyclonal Antibody diluted at 1 : 500