

SLU7 Polyclonal Antibody

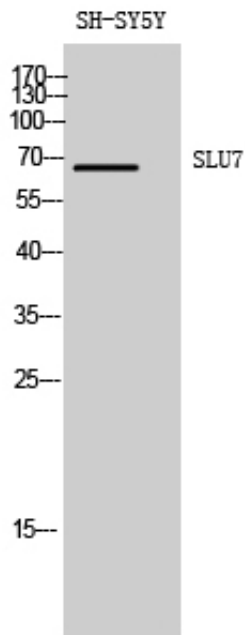
Catalog_no :	AT4322
Applications :	WB,ELISA
Reactivity :	Human,Mouse,Rat
Category :	抗原抗体
Size :	100µg/50µg/20µg
Gene_name :	SLU7
Protein_name :	Pre-mRNA-splicing factor SLU7
Humangene_id :	10569
Humanswissprot_no :	O95391
Mousegene_id :	193116
Mouseswissprot_no :	Q8BHJ9
Ratgene_id :	303057
Ratswissprot_no :	Q80ZG5
Immunogen :	The antiserum was produced against synthesized peptide derived from human SLU7. AA range:113-162
Specificity :	SLU7 Polyclonal Antibody detects endogenous levels of SLU7 protein.
Formulation :	Liquid in PBS containing 50% glycerol, 0.5% BSA and 0.02% sodium azide.
Source :	Rabbit
Dilution :	Western Blot: 1/500 - 1/2000. ELISA: 1/40000. Not yet tested in other applications.
Purification :	The antibody was affinity-purified from rabbit antiserum by affinity-chromatography using epitope-specific immunogen.
Concentration :	1 mg/ml
Storage_stability :	-20°C/1 year
Msds :	MSDS_Antibody.pdf



Other_name : SLU7; Pre-mRNA-splicing factor SLU7; hSlu7

Molecular Weight : 65KD

Product Images



Western Blot analysis of SH-SY5Y cells using SLU7
Polyclonal Antibody diluted at 1 : 1000