

## Smad1/5/9 Polyclonal Antibody

|                     |  |
|---------------------|--|
| Catalog_no :        | <u>AT4325</u>  |
| Applications :      | <u>WB,IHC-p,IF,ELISA</u>   |
| Reactivity :        | <u>Human,Mouse,Rat</u>   |
| Category :          | <u>抗原抗体</u>  |
| Size :              | <u>100µg/50µg/20µg</u>   |
| Gene_name :         | <u>SMAD1/SMAD5/SMAD9</u>   |
| Protein_name :      | <u>Mothers against decapentaplegic homolog 1/Mothers against decapentaplegic homolog 5/Mothers against decapentaplegic homolog 9</u> |
| Humangene_id :      | <u><a href="#">4086/4090/4093</a></u>  |
| Humanswissprot_no : | <u><a href="#">Q15797/Q99717/O15198</a></u>  |
| Mousegene_id :      | <u><a href="#">17125/17129/55994</a></u>   |
| Ratgene_id :        | <u><a href="#">59328/85435</a></u>   |
| Ratswissprot_no :   | <u><a href="#">P97588/Q9R1V3/O54835</a></u>  |
| Immunogen :         | <u>The antiserum was produced against synthesized peptide derived from human Smad1/5/9. AA range:10-59</u>                           |
| Specificity :       | <u>Smad1/5/9 Polyclonal Antibody detects endogenous levels of Smad1/5/9 protein.</u>   |
| Formulation :       | <u>Liquid in PBS containing 50% glycerol, 0.5% BSA and 0.02% sodium azide.</u>   |
| Source :            | <u>Rabbit</u>  |
| Dilution :          | <u>Western Blot: 1/500 - 1/2000. Immunohistochemistry: 1/100 - 1/300. ELISA: 1/10000. Not yet tested in other applications.</u>      |
| Purification :      | <u>The antibody was affinity-purified from rabbit antiserum by affinity-chromatography using epitope-specific immunogen.</u>         |
| Concentration :     | <u>1 mg/ml</u>   |
| Storage_stability : | <u>-20°C/1 year</u>  |
| Msds :              | <u><a href="#">MSDS_Antibody.pdf</a></u>   |
| Other_name :        | <u>SMAD1; BSP1; MADH1; MADR1; Mothers against decapentaplegic homolog 1; MAD</u>   |



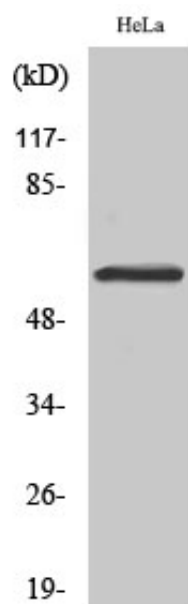
homolog 1; Mothers against DPP homolog 1; JV4-1; Mad-related protein 1; SMAD family member 1; SMAD 1; Smad1; hSMAD1; Transforming growth factor-beta-signaling protein

Molecular Weight :

56KD

---

## Product Images



Western Blot analysis of various cells using Smad1/5/9  
Polyclonal Antibody diluted at 1 : 500