

Smad2/3 Polyclonal Antibody

Catalog_no :	AT4332
Applications :	WB,IHC-p,ELISA
Reactivity :	Human,Mouse,Rat,Monkey
Category :	抗原抗体
Size :	100µg/50µg/20µg
Gene_name :	SMAD2/SMAD3
Protein_name :	Mothers against decapentaplegic homolog 2/3
Humangene_id :	4087/4088
Humanswissprot_no :	Q15796/P84022
Mousegene_id :	17126/17127
Ratgene_id :	29357/25631
Ratswissprot_no :	O70436/P84025
Immunogen :	The antiserum was produced against synthesized peptide derived from human Smad2/3. AA range:1-50
Specificity :	Smad2/3 Polyclonal Antibody detects endogenous levels of Smad2/3 protein.
Formulation :	Liquid in PBS containing 50% glycerol, 0.5% BSA and 0.02% sodium azide.
Source :	Rabbit
Dilution :	Western Blot: 1/500 - 1/2000. Immunohistochemistry: 1/100 - 1/300. ELISA: 1/10000. Not yet tested in other applications.
Purification :	The antibody was affinity-purified from rabbit antiserum by affinity-chromatography using epitope-specific immunogen.
Concentration :	1 mg/ml
Storage_stability :	-20°C/1 year
Msds :	MSDS_Antibody.pdf
Other_name :	SMAD2; MADH2; MADR2; Mothers against decapentaplegic homolog 2; MAD homolog 2; Mothers against DPP homolog 2; JV18-1; Mad-related protein 2; hMAD-2; SMAD family

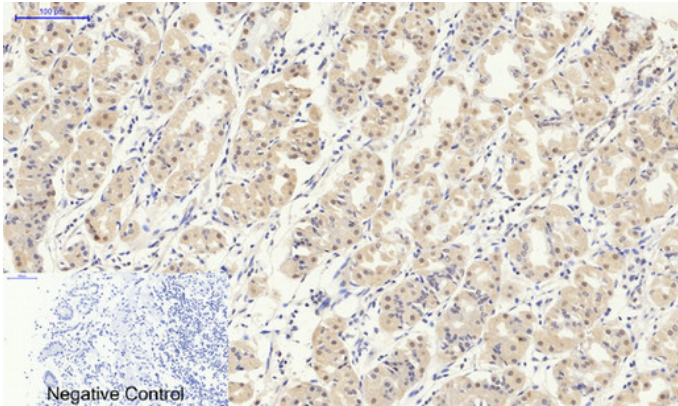


member 2; SMAD 2; Smad2; hSMAD2; SMAD3; MADH3; Mothers against decapentaplegic

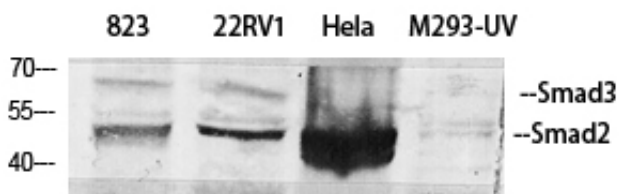
Molecular
Weight :

48KD

Product Images



Immunohistochemical analysis of paraffin-embedded Human-stomach tissue. 1, Smad2/3 Polyclonal Antibody was diluted at 1:200 (4°C, overnight). 2, Sodium citrate pH 6.0 was used for antibody retrieval (>98°C, 20min). 3, Secondary antibody was diluted at 1:200 (room temperature, 30min). Negative control was used by secondary antibody only.



Western Blot analysis of various cells using Smad2/3 Polyclonal Antibody diluted at 1 : 500