



SMAP45 Polyclonal Antibody

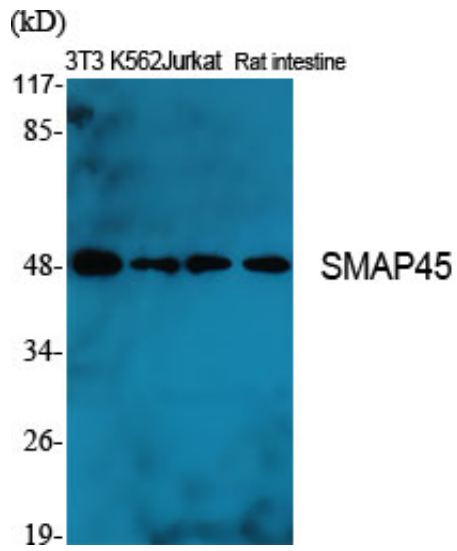
Catalog_no :	<u>AT4339</u>
Applications :	<u>WB,IHC-p,IF,ELISA</u>
Reactivity :	<u>Human,Mouse,Rat,Monkey</u>
Category :	<u>抗原抗体</u>
Size :	<u>100µg/50µg/20µg</u>
Gene_name :	<u>HDAC3</u>
Protein_name :	<u>Histone deacetylase 3</u>
Humangene_id	<u>8841</u>
:	<u></u>
Humanswissprot	<u>O15379</u>
_no :	<u></u>
Mouseswissprot	<u>O88895</u>
_no :	<u></u>
Ratgene_id :	<u>84578</u>
Ratswissprot_no	<u>Q6P6W3</u>
:	<u></u>
Immunogen :	<u>The antiserum was produced against synthesized peptide derived from human HDAC3. AA range:379-428</u>
Specificity :	<u>SMAP45 Polyclonal Antibody detects endogenous levels of SMAP45 protein.</u>
Formulation :	<u>Liquid in PBS containing 50% glycerol, 0.5% BSA and 0.02% sodium azide.</u>
Source :	<u>Rabbit</u>
Dilution :	<u>Western Blot: 1/500 - 1/2000. Immunohistochemistry: 1/100 - 1/300. Immunofluorescence: 1/200 - 1/1000. ELISA: 1/20000. Not yet tested in other applications.</u>
Purification :	<u>The antibody was affinity-purified from rabbit antiserum by affinity-chromatography using epitope-specific immunogen.</u>
Concentration :	<u>1 mg/ml</u>
Storage_stability	<u>-20°C/1 year</u>
:	<u></u>
Msds :	<u>MSDS_Antibody.pdf</u>



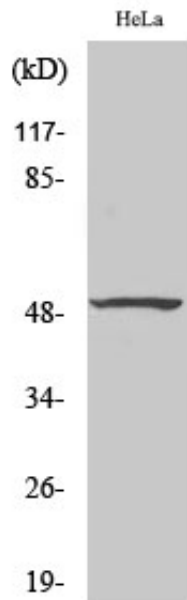
Other_name : HDAC3; Histone deacetylase 3; HD3; RPD3-2; SMAP45

Molecular Weight : 50KD

Product Images



Western Blot analysis of various cells using SMAP45
Polyclonal Antibody diluted at 1 : 2000



Western Blot analysis of HepG2 cells using SMAP45
Polyclonal Antibody diluted at 1 : 2000