

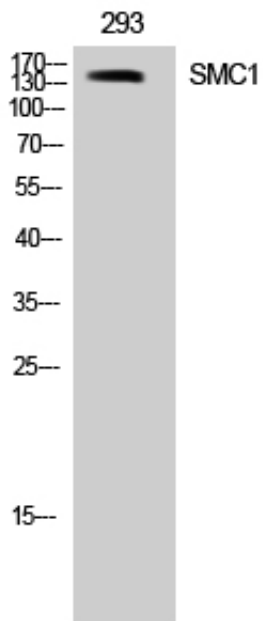
SMC1 Polyclonal Antibody

Catalog_no :	AT4340
Applications :	WB,IHC-p,ELISA
Reactivity :	Human,Mouse
Category :	抗原抗体
Size :	100µg/50µg/20µg
Gene_name :	SMC1A
Protein_name :	Structural maintenance of chromosomes protein 1A
Humangene_id :	8243
Humanswissprot_no :	Q14683
Mousegene_id :	24061
Mouseswissprot_no :	Q9CU62
Immunogen :	The antiserum was produced against synthesized peptide derived from human SMC1. AA range:931-980
Specificity :	SMC1 Polyclonal Antibody detects endogenous levels of SMC1 protein.
Formulation :	Liquid in PBS containing 50% glycerol, 0.5% BSA and 0.02% sodium azide.
Source :	Rabbit
Dilution :	Western Blot: 1/500 - 1/2000. Immunohistochemistry: 1/100 - 1/300. ELISA: 1/10000. Not yet tested in other applications.
Purification :	The antibody was affinity-purified from rabbit antiserum by affinity-chromatography using epitope-specific immunogen.
Concentration :	1 mg/ml
Storage_stability :	-20°C/1 year
Msds :	MSDS_Antibody.pdf
Other_name :	SMC1A; DXS423E; KIAA0178; SB1.8; SMC1; SMC1L1; Structural maintenance of chromosomes protein 1A; SMC protein 1A; SMC-1-alpha; SMC-1A; Sb1.8
Molecular	143KD



Weight :

Product Images



Western Blot analysis of 293 cells using SMC1 Polyclonal Antibody