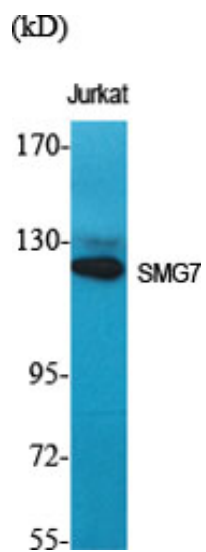


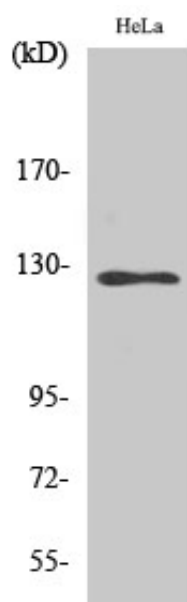
SMG7 Polyclonal Antibody

Catalog_no :	AT4342
Applications :	WB,IHC-p,IF,ELISA
Reactivity :	Human
Category :	抗原抗体
Size :	100µg/50µg/20µg
Gene_name :	SMG7
Protein_name :	Protein SMG7
Humangene_id :	9887
Humanswissprot_no :	Q92540
Immunogen :	The antiserum was produced against synthesized peptide derived from human SMG7. AA range:521-570
Specificity :	SMG7 Polyclonal Antibody detects endogenous levels of SMG7 protein.
Formulation :	Liquid in PBS containing 50% glycerol, 0.5% BSA and 0.02% sodium azide.
Source :	Rabbit
Dilution :	Western Blot: 1/500 - 1/2000. Immunohistochemistry: 1/100 - 1/300. Immunofluorescence: 1/200 - 1/1000. ELISA: 1/20000. Not yet tested in other applications.
Purification :	The antibody was affinity-purified from rabbit antiserum by affinity-chromatography using epitope-specific immunogen.
Concentration :	1 mg/ml
Storage_stability :	-20°C/1 year
Msds :	MSDS_Antibody.pdf
Other_name :	SMG7; C1orf16; EST1C; KIAA0250; Protein SMG7; EST1-like protein C; SMG-7 homolog; hSMG-7
Molecular Weight :	127KD

Product Images



Western Blot analysis of various cells using SMG7
Polyclonal Antibody diluted at 1 : 2000



Western Blot analysis of HuvEc cells using SMG7
Polyclonal Antibody diluted at 1 : 2000