



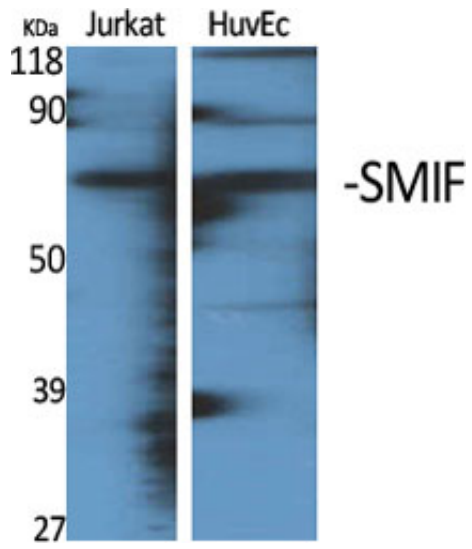
SMIF Polyclonal Antibody

Catalog_no :	AT4343
Applications :	WB,IHC-p,ELISA
Reactivity :	Human,Mouse
Category :	抗原抗体
Size :	100µg/50µg/20µg
Gene_name :	DCP1A
Protein_name :	mRNA-decapping enzyme 1A
Humangene_id :	55802
Humanswissprot_no :	Q9NPI6
Mousegene_id :	75901
Mouseswissprot_no :	Q91YD3
Immunogen :	The antiserum was produced against synthesized peptide derived from human DCP1A. AA range:111-160
Specificity :	SMIF Polyclonal Antibody detects endogenous levels of SMIF protein.
Formulation :	Liquid in PBS containing 50% glycerol, 0.5% BSA and 0.02% sodium azide.
Source :	Rabbit
Dilution :	Western Blot: 1/500 - 1/2000. Immunohistochemistry: 1/100 - 1/300. ELISA: 1/20000. Not yet tested in other applications.
Purification :	The antibody was affinity-purified from rabbit antiserum by affinity-chromatography using epitope-specific immunogen.
Concentration :	1 mg/ml
Storage_stability :	-20°C/1 year
Msds :	MSDS_Antibody.pdf
Other_name :	DCP1A; SMIF; mRNA-decapping enzyme 1A; Smad4-interacting transcriptional co-activator; Transcription factor SMIF
Molecular	75KD



Weight :

Product Images



Western Blot analysis of various cells using SMIF Polyclonal Antibody