

## sMtCK Polyclonal Antibody

Catalog_no :	AT4347
Applications :	WB,IHC-p,IF,ELISA
Reactivity :	Human,Mouse,Rat
Category :	抗原抗体
Size :	100µg/50µg/20µg
Gene_name :	CKMT2
Protein_name :	Creatine kinase S-type mitochondrial
Humangene_id	<a href="#">1160</a>
:	
Humanswissprot	<a href="#">P17540</a>
_no :	
Mousegene_id :	<a href="#">76722</a>
Mouseswissprot	<a href="#">Q6P8J7</a>
_no :	
Ratswissprot_no	<a href="#">P09605</a>
:	
Immunogen :	The antiserum was produced against synthesized peptide derived from human CKMT2. AA range:231-280
Specificity :	sMtCK Polyclonal Antibody detects endogenous levels of sMtCK protein.
Formulation :	Liquid in PBS containing 50% glycerol, 0.5% BSA and 0.02% sodium azide.
Source :	Rabbit
Dilution :	Western Blot: 1/500 - 1/2000. Immunohistochemistry: 1/100 - 1/300. Immunofluorescence: 1/200 - 1/1000. ELISA: 1/40000. Not yet tested in other applications.
Purification :	The antibody was affinity-purified from rabbit antiserum by affinity-chromatography using epitope-specific immunogen.
Concentration :	1 mg/ml
Storage_stability	-20°C/1 year
:	
Msds :	<a href="#">MSDS_Antibody.pdf</a>



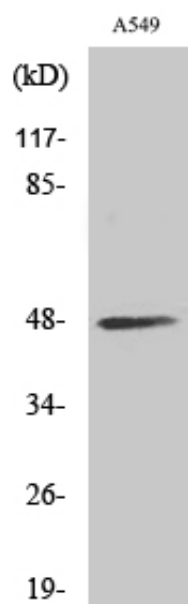
Other\_name : CKMT2; Creatine kinase S-type; mitochondrial; Basic-type mitochondrial creatine kinase; Mib-CK; Sarcomeric mitochondrial creatine kinase; S-MtCK

---

Molecular Weight : 48KD

---

## Product Images



Western Blot analysis of various cells using sMtCK Polyclonal Antibody