



SMYD2 Polyclonal Antibody

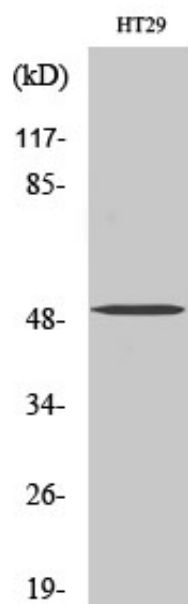
Catalog_no :	AT4350
Applications :	WB,ELISA
Reactivity :	Human,Mouse,Rat
Category :	抗原抗体
Size :	100µg/50µg/20µg
Gene_name :	SMYD2
Protein_name :	N-lysine methyltransferase SMYD2
Humangene_id :	56950
Humanswissprot_no :	Q9NRG4
Mousegene_id :	226830
Mouseswissprot_no :	Q8R5A0
Ratgene_id :	289372
Ratswissprot_no :	Q7M6Z3
Immunogen :	The antiserum was produced against synthesized peptide derived from human SMYD2. AA range:99-148
Specificity :	SMYD2 Polyclonal Antibody detects endogenous levels of SMYD2 protein.
Formulation :	Liquid in PBS containing 50% glycerol, 0.5% BSA and 0.02% sodium azide.
Source :	Rabbit
Dilution :	Western Blot: 1/500 - 1/2000. ELISA: 1/10000. Not yet tested in other applications.
Purification :	The antibody was affinity-purified from rabbit antiserum by affinity-chromatography using epitope-specific immunogen.
Concentration :	1 mg/ml
Storage_stability :	-20°C/1 year
Msds :	MSDS_Antibody.pdf



Other_name : SMYD2; KMT3C; N-lysine methyltransferase SMYD2; HSKM-B; Histone methyltransferase SMYD2; Lysine N-methyltransferase 3C; SET and MYND domain-containing protein 2

Molecular Weight : 50KD

Product Images



Western Blot analysis of various cells using SMYD2
Polyclonal Antibody diluted at 1 : 2000