

SNX1 Polyclonal Antibody

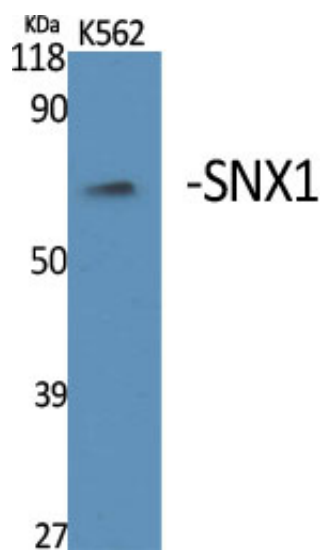
Catalog_no :	AT4358
Applications :	WB,ELISA
Reactivity :	Human,Mouse,Rat
Category :	抗原抗体
Size :	100µg/50µg/20µg
Gene_name :	SNX1
Protein_name :	Sorting nexin-1
Humangene_id :	6642
Humanswissprot_no :	Q13596
Mousegene_id :	56440
Mouseswissprot_no :	Q9WV80
Ratgene_id :	84471
Ratswissprot_no :	Q99N27
Immunogen :	Synthesized peptide derived from the Internal region of human SNX1.
Specificity :	SNX1 Polyclonal Antibody detects endogenous levels of SNX1 protein.
Formulation :	Liquid in PBS containing 50% glycerol, 0.5% BSA and 0.02% sodium azide.
Source :	Rabbit
Dilution :	Western Blot: 1/500 - 1/2000. ELISA: 1/40000. Not yet tested in other applications.
Purification :	The antibody was affinity-purified from rabbit antiserum by affinity-chromatography using epitope-specific immunogen.
Concentration :	1 mg/ml
Storage_stability :	-20°C/1 year
Msds :	MSDS_Antibody.pdf
Other_name :	SNX1; Sorting nexin-1



Molecular
Weight :

60KD

Product Images



Western Blot analysis of various cells using SNX1 Polyclonal Antibody