



## SOD-1 Polyclonal Antibody

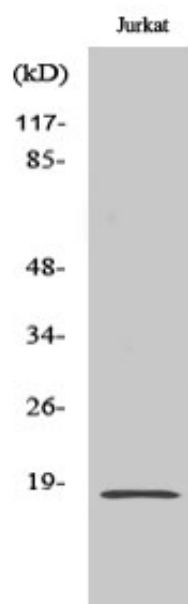
Catalog_no :	<u>AT4364</u>
Applications :	<u>WB,ELISA</u>
Reactivity :	<u>Human,Mouse,Rat</u>
Category :	<u>抗原抗体</u>
Size :	<u>100µg/50µg/20µg</u>
Gene_name :	<u>SOD1</u>
Protein_name :	<u>Superoxide dismutase [Cu-Zn]</u>
Humangene_id :	<u><a href="#">6647</a></u>
Humanswissprot_no :	<u><a href="#">P00441</a></u>
Mousegene_id :	<u><a href="#">20655</a></u>
Mouseswissprot_no :	<u><a href="#">P08228</a></u>
Ratgene_id :	<u><a href="#">24786</a></u>
Ratswissprot_no :	<u><a href="#">P07632</a></u>
Immunogen :	<u>The antiserum was produced against synthesized peptide derived from human SOD-1. AA range:36-85</u>
Specificity :	<u>SOD-1 Polyclonal Antibody detects endogenous levels of SOD-1 protein.</u>
Formulation :	<u>Liquid in PBS containing 50% glycerol, 0.5% BSA and 0.02% sodium azide.</u>
Source :	<u>Rabbit</u>
Dilution :	<u>Western Blot: 1/500 - 1/2000. ELISA: 1/10000. Not yet tested in other applications.</u>
Purification :	<u>The antibody was affinity-purified from rabbit antiserum by affinity-chromatography using epitope-specific immunogen.</u>
Concentration :	<u>1 mg/ml</u>
Storage_stability :	<u>-20°C/1 year</u>
Msds :	<u><a href="#">MSDS_Antibody.pdf</a></u>



Other\_name : SOD1; Superoxide dismutase [Cu-Zn]; Superoxide dismutase 1; hSod1

Molecular Weight : 18KD

## Product Images



Western Blot analysis of various cells using SOD-1 Polyclonal Antibody diluted at 1 : 1000