

Somatostatin Polyclonal Antibody

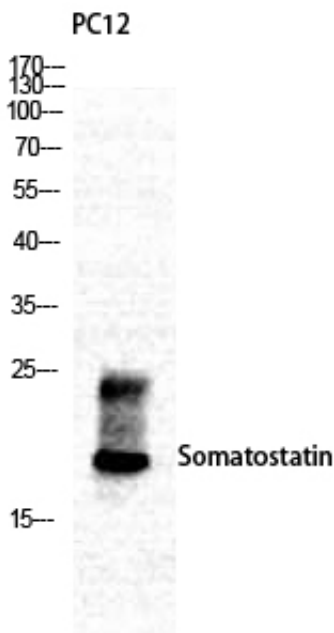
Catalog_no :	<u>AT4365</u>
Applications :	<u>WB,IHC-p,ELISA</u>
Reactivity :	<u>Human,Mouse,Rat</u>
Category :	<u>抗原抗体</u>
Size :	<u>100µg/50µg/20µg</u>
Gene_name :	<u>SST</u>
Protein_name :	<u>Somatostatin</u>
Humangene_id :	<u>6750</u>
Humanswissprot_no :	<u>P61278</u>
Mousegene_id :	<u>20604</u>
Mouseswissprot_no :	<u>P60041</u>
Ratgene_id :	<u>24797</u>
Ratswissprot_no :	<u>P60042</u>
Immunogen :	<u>The antiserum was produced against synthesized peptide derived from human Somatostatin. AA range:10-59</u>
Specificity :	<u>Somatostatin Polyclonal Antibody detects endogenous levels of Somatostatin protein.</u>
Formulation :	<u>Liquid in PBS containing 50% glycerol, 0.5% BSA and 0.02% sodium azide.</u>
Source :	<u>Rabbit</u>
Dilution :	<u>Western Blot: 1/500 - 1/2000. Immunohistochemistry: 1/100 - 1/300. ELISA: 1/5000. Not yet tested in other applications.</u>
Purification :	<u>The antibody was affinity-purified from rabbit antiserum by affinity-chromatography using epitope-specific immunogen.</u>
Concentration :	<u>1 mg/ml</u>
Storage_stability :	<u>-20°C/1 year</u>
Msds :	<u>MSDS_Antibody.pdf</u>



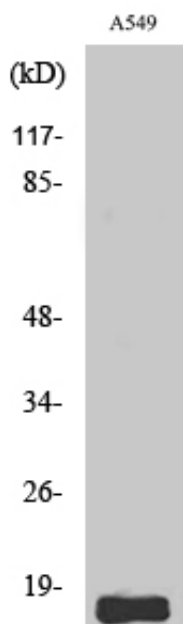
Other_name : SST; Somatostatin; Growth hormone release-inhibiting factor

Molecular Weight : 17KD

Product Images

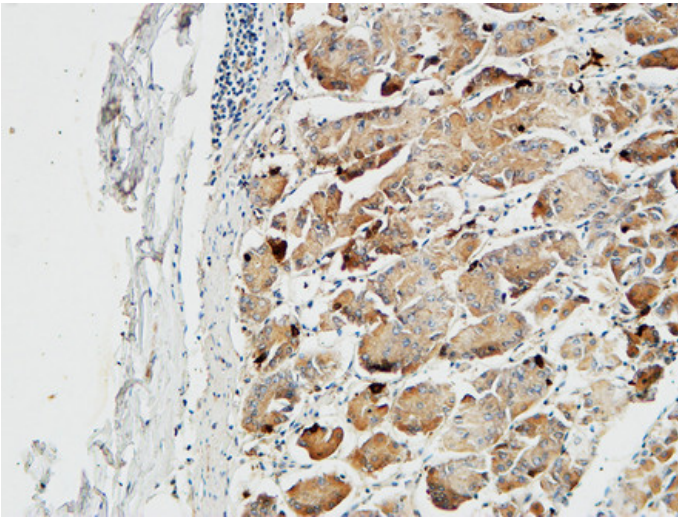
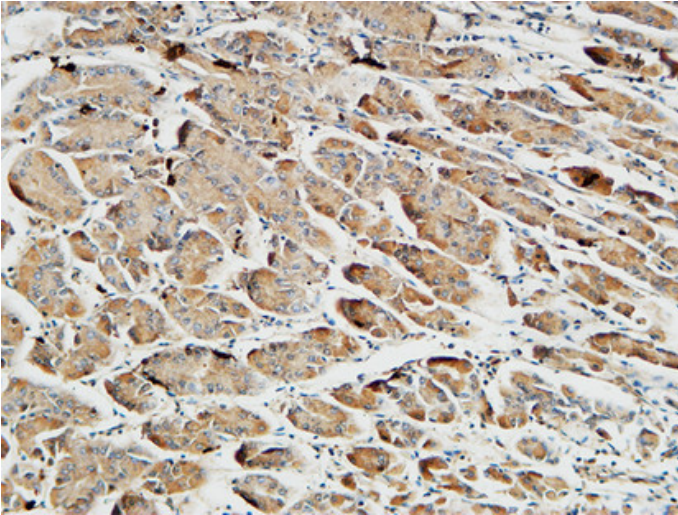


Western Blot analysis of various cells using Somatostatin Polyclonal Antibody

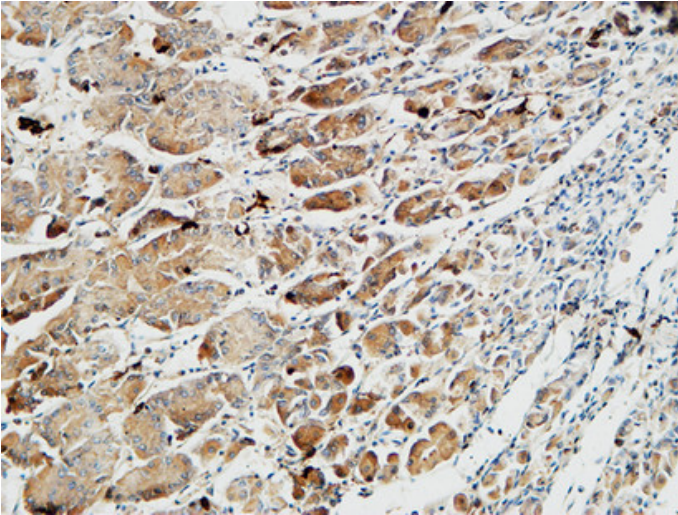


Western Blot analysis of A549 cells using Somatostatin Polyclonal Antibody

Immunohistochemical analysis of paraffin-embedded Human Gastric fundus. 1, Antibody was diluted at 1:200(4°,overnight). 2, High-pressure and temperature EDTA, pH8.0 was used for antigen retrieval. 3,Secondary antibody was diluted at 1:200(room temperature, 30min).



Immunohistochemical analysis of paraffin-embedded Human Gastric fundus. 1, Antibody was diluted at 1:200(4°, overnight). 2, High-pressure and temperature EDTA, pH8.0 was used for antigen retrieval. 3, Secondary antibody was diluted at 1:200(room temperature, 30min).



Immunohistochemical analysis of paraffin-embedded Human Gastric fundus. 1, Antibody was diluted at 1:200(4°, overnight). 2, High-pressure and temperature EDTA, pH8.0 was used for antigen retrieval. 3, Secondary antibody was diluted at 1:200(room temperature, 30min).