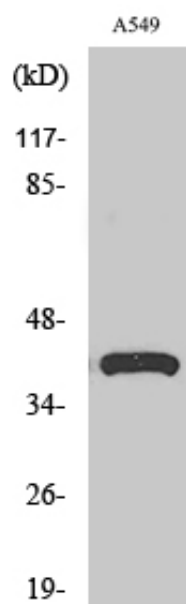


SP-B Polyclonal Antibody

Catalog_no :	AT4380
Applications :	WB,ELISA
Reactivity :	Human
Category :	抗原抗体
Size :	100µg/50µg/20µg
Gene_name :	SFTPB
Protein_name :	Pulmonary surfactant-associated protein B
Humangene_id :	6439
Humanswissprot_no :	P07988
Immunogen :	The antiserum was produced against synthesized peptide derived from human SP-B. AA range:243-292
Specificity :	SP-B Polyclonal Antibody detects endogenous levels of SP-B protein.
Formulation :	Liquid in PBS containing 50% glycerol, 0.5% BSA and 0.02% sodium azide.
Source :	Rabbit
Dilution :	Western Blot: 1/500 - 1/2000. ELISA: 1/10000. Not yet tested in other applications.
Purification :	The antibody was affinity-purified from rabbit antiserum by affinity-chromatography using epitope-specific immunogen.
Concentration :	1 mg/ml
Storage_stability :	-20°C/1 year
Msds :	MSDS_Antibody.pdf
Other_name :	SFTPB; SFTP3; Pulmonary surfactant-associated protein B; SP-B; 18 kDa pulmonary-surfactant protein; 6 kDa protein; Pulmonary surfactant-associated proteolipid SPL(Phe)
Molecular Weight :	42KD

Product Images



Western Blot analysis of various cells using SP-B Polyclonal Antibody diluted at 1 : 1000