

SphK2 Polyclonal Antibody

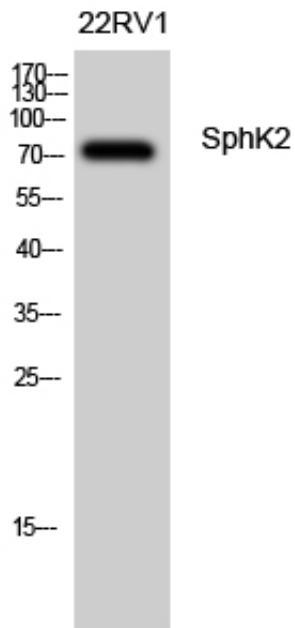
Catalog_no :	AT4383
Applications :	WB,IHC-p,ELISA
Reactivity :	Human,Mouse,Rat
Category :	抗原抗体
Size :	100µg/50µg/20µg
Gene_name :	SPHK2
Protein_name :	Sphingosine kinase 2
Humangene_id :	56848
Humanswissprot_no :	Q9NRA0
Mousegene_id :	56632
Mouseswissprot_no :	Q9JIA7
Immunogen :	The antiserum was produced against synthesized peptide derived from human SPHK2. AA range:580-629
Specificity :	SphK2 Polyclonal Antibody detects endogenous levels of SphK2 protein.
Formulation :	Liquid in PBS containing 50% glycerol, 0.5% BSA and 0.02% sodium azide.
Source :	Rabbit
Dilution :	Western Blot: 1/500 - 1/2000. Immunohistochemistry: 1/100 - 1/300. ELISA: 1/5000. Not yet tested in other applications.
Purification :	The antibody was affinity-purified from rabbit antiserum by affinity-chromatography using epitope-specific immunogen.
Concentration :	1 mg/ml
Storage_stability :	-20°C/1 year
Msds :	MSDS_Antibody.pdf
Other_name :	SPHK2; Sphingosine kinase 2; SK 2; SPK 2
Molecular Weight :	70KD



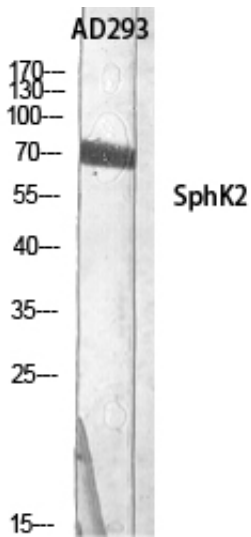
专注二抗产品

Biodragon旗下品牌

Product Images



Western Blot analysis of 22RV1 cells using SphK2 Polyclonal Antibody diluted at 1 : 500



Western Blot analysis of AD293 using SphK2 Polyclonal Antibody diluted at 1 : 500