



Spindlin-1 Polyclonal Antibody

Catalog_no :	AT4385
Applications :	WB,IHC-p,IF,ELISA
Reactivity :	Human,Mouse,Rat
Category :	抗原抗体
Size :	100µg/50µg/20µg
Gene_name :	SPIN1
Protein_name :	Spindlin-1
Humangene_id :	10927
Humanswissprot_no :	Q9Y657
Mousegene_id :	20729
Mouseswissprot_no :	Q61142
Ratgene_id :	1.00364e+008
Ratswissprot_no :	Q4V8J7
Immunogen :	The antiserum was produced against synthesized peptide derived from human SPIN1. AA range:111-160
Specificity :	Spindlin-1 Polyclonal Antibody detects endogenous levels of Spindlin-1 protein.
Formulation :	Liquid in PBS containing 50% glycerol, 0.5% BSA and 0.02% sodium azide.
Source :	Rabbit
Dilution :	Western Blot: 1/500 - 1/2000. Immunohistochemistry: 1/100 - 1/300. Immunofluorescence: 1/200 - 1/1000. ELISA: 1/20000. Not yet tested in other applications.
Purification :	The antibody was affinity-purified from rabbit antiserum by affinity-chromatography using epitope-specific immunogen.
Concentration :	1 mg/ml
Storage_stability :	-20°C/1 year

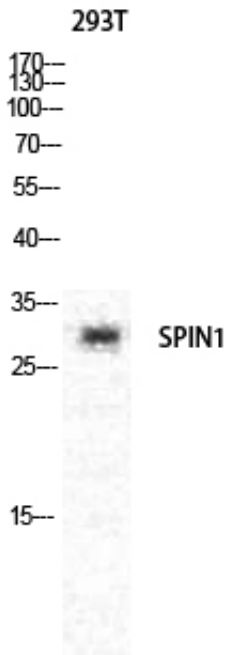


MsdS : MSDS_Antibody.pdf

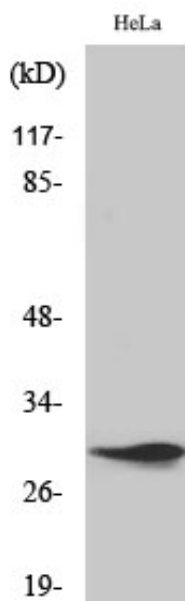
Other_name : SPIN1; OCR; SPIN; Spindlin-1; Ovarian cancer-related protein

Molecular Weight : 30KD

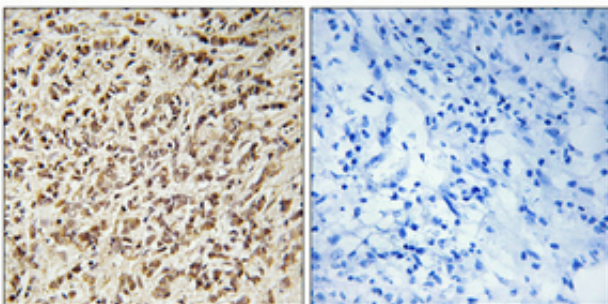
Product Images



Western Blot analysis of various cells using Spindlin-1 Polyclonal Antibody diluted at 1 : 1000 cells nucleus extracted by Minute TM Cytoplasmic and Nuclear Fractionation kit (SC-003, Inventbiotech, MN, USA).



Western Blot analysis of HeLa cells using Spindlin-1 Polyclonal Antibody diluted at 1 : 1000 cells nucleus extracted by Minute TM Cytoplasmic and Nuclear Fractionation kit (SC-003, Inventbiotech, MN, USA).



Immunohistochemical analysis of paraffin-embedded Human breast cancer. Antibody was diluted at 1:100(4°, overnight). High-pressure and temperature Tris-EDTA, pH8.0 was used for antigen retrieval. Negative control (right) obtained from antibody was pre-absorbed by immunogen peptide.