

Splicing factor 1 Polyclonal Antibody

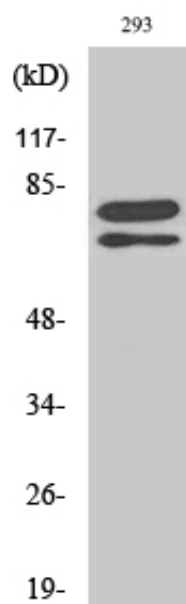
| | |
|---------------------|---|
| Catalog_no : | AT4387 |
| Applications : | WB,IHC-p,IF,ELISA |
| Reactivity : | Human,Mouse |
| Category : | 抗原抗体 |
| Size : | 100µg/50µg/20µg |
| Gene_name : | SF1 |
| Protein_name : | Splicing factor 1 |
| Humangene_id : | 7536 |
| Humanswissprot_no : | Q15637 |
| Mouseswissprot_no : | Q64213 |
| Immunogen : | The antiserum was produced against synthesized peptide derived from human SF1. AA range:48-97 |
| Specificity : | Splicing factor 1 Polyclonal Antibody detects endogenous levels of Splicing factor 1 protein. |
| Formulation : | Liquid in PBS containing 50% glycerol, 0.5% BSA and 0.02% sodium azide. |
| Source : | Rabbit |
| Dilution : | Western Blot: 1/500 - 1/2000. Immunohistochemistry: 1/100 - 1/300. Immunofluorescence: 1/200 - 1/1000. ELISA: 1/20000. Not yet tested in other applications. |
| Purification : | The antibody was affinity-purified from rabbit antiserum by affinity-chromatography using epitope-specific immunogen. |
| Concentration : | 1 mg/ml |
| Storage_stability : | -20°C/1 year |
| Msds : | MSDS_Antibody.pdf |
| Other_name : | SF1; ZFM1; ZNF162; Splicing factor 1; Mammalian branch point-binding protein; BBP; mBBP; Transcription factor ZFM1; Zinc finger gene in MEN1 locus; Zinc finger protein 162 |



Molecular
Weight :

68KD

Product Images



Western Blot analysis of various cells using Splicing factor 1 Polyclonal Antibody diluted at 1 : 500