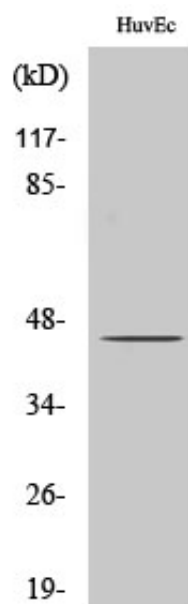




SPT3 Polyclonal Antibody

Catalog_no :	AT4389
Applications :	WB,IHC-p,ELISA
Reactivity :	Human
Category :	抗原抗体
Size :	100µg/50µg/20µg
Gene_name :	SUPT3H
Protein_name :	Transcription initiation protein SPT3 homolog
Humangene_id :	8464
Humanswissprot_no :	O75486
Immunogen :	The antiserum was produced against synthesized peptide derived from human SUPT3H. AA range:171-220
Specificity :	SPT3 Polyclonal Antibody detects endogenous levels of SPT3 protein.
Formulation :	Liquid in PBS containing 50% glycerol, 0.5% BSA and 0.02% sodium azide.
Source :	Rabbit
Dilution :	Western Blot: 1/500 - 1/2000. Immunohistochemistry: 1/100 - 1/300. ELISA: 1/20000. Not yet tested in other applications.
Purification :	The antibody was affinity-purified from rabbit antiserum by affinity-chromatography using epitope-specific immunogen.
Concentration :	1 mg/ml
Storage_stability :	-20°C/1 year
Msds :	MSDS_Antibody.pdf
Other_name :	SUPT3H; SPT3; Transcription initiation protein SPT3 homolog; SPT3-like protein
Molecular Weight :	50KD

Product Images



Western Blot analysis of various cells using SPT3 Polyclonal Antibody cells nucleus extracted by Minute TM Cytoplasmic and Nuclear Fractionation kit (SC-003, Inventbiotech, MN, USA).