

## SR-1A Polyclonal Antibody

Catalog_no :	AT4391
Applications :	WB,IHC-p,IF,ELISA
Reactivity :	Human,Mouse,Rat
Category :	抗原抗体
Size :	100µg/50µg/20µg
Gene_name :	HTR1A
Protein_name :	5-hydroxytryptamine receptor 1A
Humangene_id :	<a href="#">3350</a>
Humanswissprot_no :	<a href="#">P08908</a>
Mousegene_id :	<a href="#">15550</a>
Mouseswissprot_no :	<a href="#">Q64264</a>
Ratgene_id :	<a href="#">24473</a>
Ratswissprot_no :	<a href="#">P19327</a>
Immunogen :	The antiserum was produced against synthesized peptide derived from human 5-HT-1A. AA range:291-340
Specificity :	SR-1A Polyclonal Antibody detects endogenous levels of SR-1A protein.
Formulation :	Liquid in PBS containing 50% glycerol, 0.5% BSA and 0.02% sodium azide.
Source :	Rabbit
Dilution :	Western Blot: 1/500 - 1/2000. Immunohistochemistry: 1/100 - 1/300. Immunofluorescence: 1/200 - 1/1000. ELISA: 1/20000. Not yet tested in other applications.
Purification :	The antibody was affinity-purified from rabbit antiserum by affinity-chromatography using epitope-specific immunogen.
Concentration :	1 mg/ml
Storage_stability :	-20°C/1 year

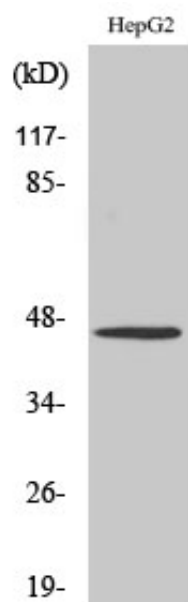


MsdS : MSDS\_Antibody.pdf

Other\_name : HTR1A; ADRB2RL1; ADRBRL1; 5-hydroxytryptamine receptor 1A; 5-HT-1A; 5-HT1A; G-21; Serotonin receptor 1A

Molecular Weight : 46KD

## Product Images



Western Blot analysis of various cells using SR-1A  
Polyclonal Antibody diluted at 1 : 500