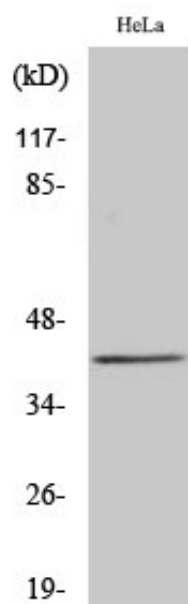


## SR-1E Polyclonal Antibody

Catalog_no :	AT4394
Applications :	WB,ELISA
Reactivity :	Human
Category :	抗原抗体
Size :	100µg/50µg/20µg
Gene_name :	HTR1E
Protein_name :	5-hydroxytryptamine receptor 1E
Humangene_id :	<a href="#">3354</a>
Humanswissprot_no :	<a href="#">P28566</a>
Immunogen :	The antiserum was produced against synthesized peptide derived from human 5-HT-1E. AA range:101-150
Specificity :	SR-1E Polyclonal Antibody detects endogenous levels of SR-1E protein.
Formulation :	Liquid in PBS containing 50% glycerol, 0.5% BSA and 0.02% sodium azide.
Source :	Rabbit
Dilution :	Western Blot: 1/500 - 1/2000. ELISA: 1/5000. Not yet tested in other applications.
Purification :	The antibody was affinity-purified from rabbit antiserum by affinity-chromatography using epitope-specific immunogen.
Concentration :	1 mg/ml
Storage_stability :	-20°C/1 year
Msds :	MSDS_Antibody.pdf
Other_name :	HTR1E; 5-hydroxytryptamine receptor 1E; 5-HT-1E; 5-HT1E; S31; Serotonin receptor 1E
Molecular Weight :	42KD

## Product Images



Western Blot analysis of various cells using SR-1E Polyclonal Antibody