



SR-1F Polyclonal Antibody

Catalog_no :	<u>AT4395</u>
Applications :	<u>WB,IF,ELISA</u>
Reactivity :	<u>Human,Mouse,Rat,Monkey</u>
Category :	<u>抗原抗体</u>
Size :	<u>100µg/50µg/20µg</u>
Gene_name :	<u>HTR1F</u>
Protein_name :	<u>5-hydroxytryptamine receptor 1F</u>
Humangene_id :	<u>3355</u>
Humanswissprot_no :	<u>P30939</u>
Mousegene_id :	<u>15557</u>
Mouseswissprot_no :	<u>Q02284</u>
Ratswissprot_no :	<u>P30940</u>
Immunogen :	<u>The antiserum was produced against synthesized peptide derived from human 5-HT-1F. AA range:101-150</u>
Specificity :	<u>SR-1F Polyclonal Antibody detects endogenous levels of SR-1F protein.</u>
Formulation :	<u>Liquid in PBS containing 50% glycerol, 0.5% BSA and 0.02% sodium azide.</u>
Source :	<u>Rabbit</u>
Dilution :	<u>Western Blot: 1/500 - 1/2000. Immunofluorescence: 1/200 - 1/1000. ELISA: 1/40000. Not yet tested in other applications.</u>
Purification :	<u>The antibody was affinity-purified from rabbit antiserum by affinity-chromatography using epitope-specific immunogen.</u>
Concentration :	<u>1 mg/ml</u>
Storage_stability :	<u>-20°C/1 year</u>
Msds :	<u>MSDS_Antibody.pdf</u>
Other_name :	<u>HTR1F; HTR1EL; 5-hydroxytryptamine receptor 1F; 5-HT-1F; 5-HT1F; Serotonin receptor</u>

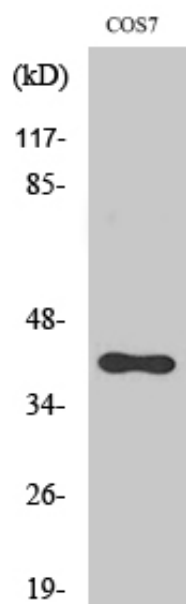


1F

Molecular
Weight :

38KD

Product Images



Western Blot analysis of various cells using SR-1F Polyclonal Antibody diluted at 1 : 1000