

SR-2C Polyclonal Antibody

Catalog_no :	AT4399
Applications :	WB,IHC-p,IF,ELISA
Reactivity :	Human,Mouse,Rat
Category :	抗原抗体
Size :	100µg/50µg/20µg
Gene_name :	HTR2C
Protein_name :	5-hydroxytryptamine receptor 2C
Humangene_id :	3358
Humanswissprot_no :	P28335
Mousegene_id :	15560
Mouseswissprot_no :	P34968
Ratgene_id :	25187
Ratswissprot_no :	P08909
Immunogen :	The antiserum was produced against synthesized peptide derived from human 5-HT-2C. AA range:161-210
Specificity :	SR-2C Polyclonal Antibody detects endogenous levels of SR-2C protein.
Formulation :	Liquid in PBS containing 50% glycerol, 0.5% BSA and 0.02% sodium azide.
Source :	Rabbit
Dilution :	Western Blot: 1/500 - 1/2000. Immunohistochemistry: 1/100 - 1/300. Immunofluorescence: 1/200 - 1/1000. ELISA: 1/5000. Not yet tested in other applications.
Purification :	The antibody was affinity-purified from rabbit antiserum by affinity-chromatography using epitope-specific immunogen.
Concentration :	1 mg/ml
Storage_stability :	-20°C/1 year

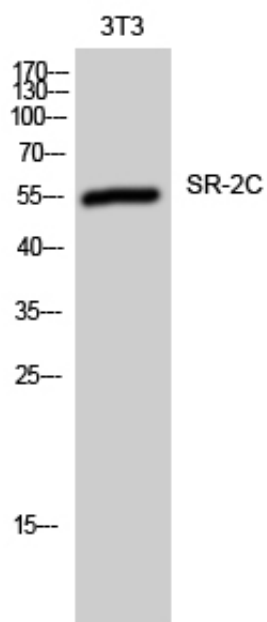


Msd : MSDS_Antibody.pdf

Other_name : HTR2C; HTR1C; 5-hydroxytryptamine receptor 2C; 5-HT-2C; 5-HT2C; 5-HTR2C; 5-hydroxytryptamine receptor 1C; 5-HT-1C; 5-HT1C; Serotonin receptor 2C

Molecular Weight : 55KD

Product Images



Western Blot analysis of 3T3 cells using SR-2C Polyclonal Antibody