

## SR-6 Polyclonal Antibody

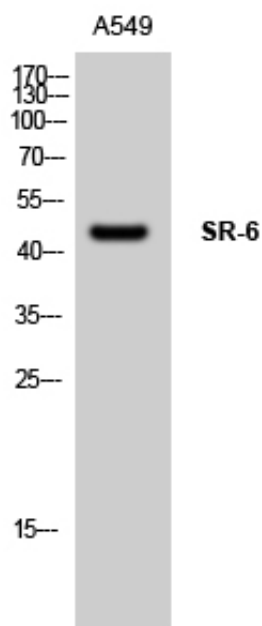
Catalog_no :	AT4408
Applications :	WB,ELISA
Reactivity :	Human,Mouse,Rat
Category :	抗原抗体
Size :	100µg/50µg/20µg
Gene_name :	HTR6
Protein_name :	5-hydroxytryptamine receptor 6
Humangene_id :	<a href="#">3362</a>
Humanswissprot_no :	<a href="#">P50406</a>
Mousegene_id :	<a href="#">15565</a>
Mouseswissprot_no :	<a href="#">Q9R1C8</a>
Ratgene_id :	<a href="#">64354</a>
Ratswissprot_no :	<a href="#">P31388</a>
Immunogen :	The antiserum was produced against synthesized peptide derived from human 5-HT-6. AA range:221-270
Specificity :	SR-6 Polyclonal Antibody detects endogenous levels of SR-6 protein.
Formulation :	Liquid in PBS containing 50% glycerol, 0.5% BSA and 0.02% sodium azide.
Source :	Rabbit
Dilution :	Western Blot: 1/500 - 1/2000. ELISA: 1/20000. Not yet tested in other applications.
Purification :	The antibody was affinity-purified from rabbit antiserum by affinity-chromatography using epitope-specific immunogen.
Concentration :	1 mg/ml
Storage_stability :	-20°C/1 year
Msds :	<a href="#">MSDS_Antibody.pdf</a>



Other\_name : HTR6; 5-hydroxytryptamine receptor 6; 5-HT-6; 5-HT6; Serotonin receptor 6

Molecular Weight : 47KD

Product Images



Western Blot analysis of A549 cells using SR-6 Polyclonal Antibody