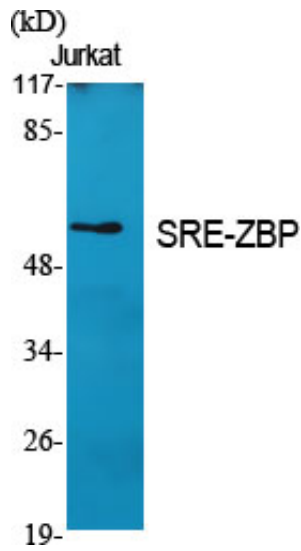


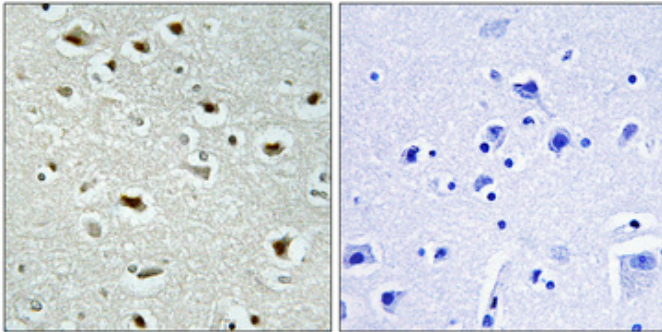
SRE-ZBP Polyclonal Antibody

Catalog_no :	AT4413
Applications :	WB,IF,ELISA
Reactivity :	Human
Category :	抗原抗体
Size :	100µg/50µg/20µg
Gene_name :	ZNF187
Protein_name :	Zinc finger protein 187
Humangene_id :	7741
Humanswissprot_no :	Q16670
Immunogen :	The antiserum was produced against synthesized peptide derived from human ZNF187. AA range:51-100
Specificity :	SRE-ZBP Polyclonal Antibody detects endogenous levels of SRE-ZBP protein.
Formulation :	Liquid in PBS containing 50% glycerol, 0.5% BSA and 0.02% sodium azide.
Source :	Rabbit
Dilution :	Western Blot: 1/500 - 1/2000. Immunofluorescence: 1/200 - 1/1000. ELISA: 1/5000. Not yet tested in other applications.
Purification :	The antibody was affinity-purified from rabbit antiserum by affinity-chromatography using epitope-specific immunogen.
Concentration :	1 mg/ml
Storage_stability :	-20°C/1 year
Msds :	MSDS_Antibody.pdf
Other_name :	ZNF187; ZSCAN26; Zinc finger protein 187; Protein SRE-ZBP; Zinc finger and SCAN domain-containing protein 26
Molecular Weight :	55KD

Product Images



Western Blot analysis of various cells using SRE-ZBP Polyclonal Antibody cells nucleus extracted by Minute TM Cytoplasmic and Nuclear Fractionation kit (SC-003, Inventbiotech, MN, USA).



Immunohistochemical analysis of paraffin-embedded Human brain. Antibody was diluted at 1:100 (4°, overnight). High-pressure and temperature Tris-EDTA, pH 8.0 was used for antigen retrieval. Negative control (right) obtained from antibody was pre-absorbed by immunogen peptide.