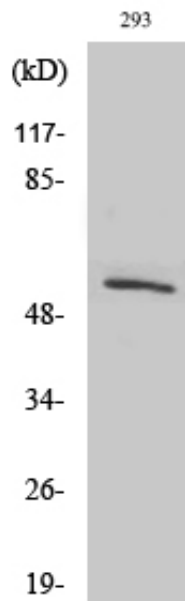


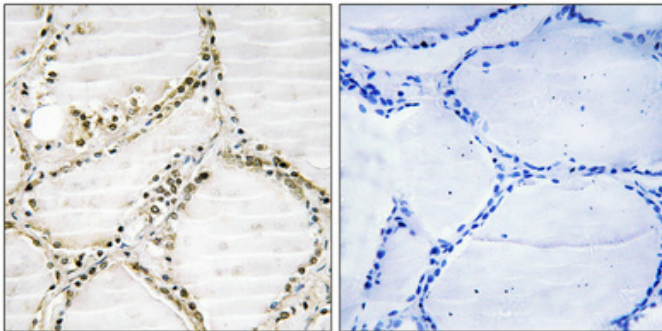
## SRp75 Polyclonal Antibody

Catalog_no :	AT4421
Applications :	WB,IHC-p,ELISA
Reactivity :	Human,Mouse
Category :	抗原抗体
Size :	100µg/50µg/20µg
Gene_name :	SRSF4
Protein_name :	Serine/arginine-rich splicing factor 4
Humangene_id :	<a href="#">6429</a>
Humanswissprot_no :	<a href="#">Q08170</a>
Mouseswissprot_no :	<a href="#">Q8VE97</a>
Immunogen :	The antiserum was produced against synthesized peptide derived from human SFRS4. AA range:111-160
Specificity :	SRp75 Polyclonal Antibody detects endogenous levels of SRp75 protein.
Formulation :	Liquid in PBS containing 50% glycerol, 0.5% BSA and 0.02% sodium azide.
Source :	Rabbit
Dilution :	Western Blot: 1/500 - 1/2000. Immunohistochemistry: 1/100 - 1/300. ELISA: 1/20000. Not yet tested in other applications.
Purification :	The antibody was affinity-purified from rabbit antiserum by affinity-chromatography using epitope-specific immunogen.
Concentration :	1 mg/ml
Storage_stability :	-20°C/1 year
Msds :	MSDS_Antibody.pdf
Other_name :	SRSF4; SFRS4; SRP75; Serine/arginine-rich splicing factor 4; Pre-mRNA-splicing factor SRP75; SRP001LB; Splicing factor; arginine/serine-rich 4
Molecular Weight :	57KD

## Product Images



Western Blot analysis of various cells using SRp75 Polyclonal Antibody diluted at 1 : 1000 cells nucleus extracted by Minute TM Cytoplasmic and Nuclear Fractionation kit (SC-003, Inventbiotech, MN, USA).



Immunohistochemical analysis of paraffin-embedded Human thyroid gland. Antibody was diluted at 1:100(4°, overnight). High-pressure and temperature Tris-EDTA, pH8.0 was used for antigen retrieval. Negative control (right) obtained from antibody was pre-absorbed by immunogen peptide.