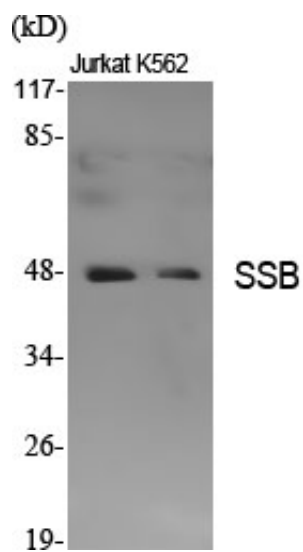


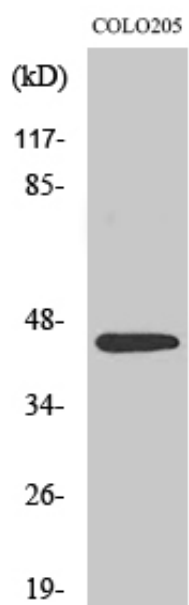
SSB Polyclonal Antibody

Catalog_no :	AT4425
Applications :	WB,IHC-p,ELISA
Reactivity :	Human
Category :	抗原抗体
Size :	100µg/50µg/20µg
Gene_name :	SSB
Protein_name :	Lupus La protein
Humangene_id :	6741
Humanswissprot_no :	P05455
Immunogen :	The antiserum was produced against synthesized peptide derived from human SSB. AA range:341-390
Specificity :	SSB Polyclonal Antibody detects endogenous levels of SSB protein.
Formulation :	Liquid in PBS containing 50% glycerol, 0.5% BSA and 0.02% sodium azide.
Source :	Rabbit
Dilution :	Western Blot: 1/500 - 1/2000. Immunohistochemistry: 1/100 - 1/300. ELISA: 1/40000. Not yet tested in other applications.
Purification :	The antibody was affinity-purified from rabbit antiserum by affinity-chromatography using epitope-specific immunogen.
Concentration :	1 mg/ml
Storage_stability :	-20°C/1 year
Msds :	MSDS_Antibody.pdf
Other_name :	SSB; Lupus La protein; La autoantigen; La ribonucleoprotein; Sjogren syndrome type B antigen; SS-B
Molecular Weight :	47KD

Product Images



Western Blot analysis of various cells using SSB Polyclonal Antibody



Western Blot analysis of COLO205 cells using SSB Polyclonal Antibody