

## SSH3 Polyclonal Antibody

Catalog_no :	AT4428
Applications :	WB,IHC-p,ELISA
Reactivity :	Human,Mouse,Rat
Category :	抗原抗体
Size :	100µg/50µg/20µg
Gene_name :	SSH3
Protein_name :	Protein phosphatase Slingshot homolog 3
Humangene_id :	<a href="#">54961</a>
Humanswissprot_no :	<a href="#">Q8TE77</a>
Mousegene_id :	<a href="#">245857</a>
Mouseswissprot_no :	<a href="#">Q8K330</a>
Ratgene_id :	<a href="#">365396</a>
Ratswissprot_no :	<a href="#">Q5XIS1</a>
Immunogen :	The antiserum was produced against synthesized peptide derived from human SSH3. AA range:357-406
Specificity :	SSH3 Polyclonal Antibody detects endogenous levels of SSH3 protein.
Formulation :	Liquid in PBS containing 50% glycerol, 0.5% BSA and 0.02% sodium azide.
Source :	Rabbit
Dilution :	Western Blot: 1/500 - 1/2000. Immunohistochemistry: 1/100 - 1/300. ELISA: 1/40000. Not yet tested in other applications.
Purification :	The antibody was affinity-purified from rabbit antiserum by affinity-chromatography using epitope-specific immunogen.
Concentration :	1 mg/ml
Storage_stability :	-20°C/1 year
Msds :	MSDS_Antibody.pdf



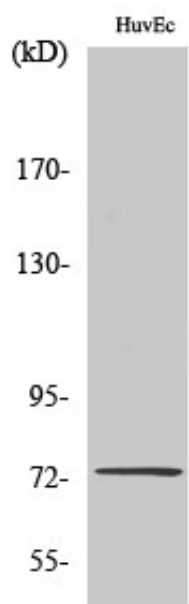
Other\_name : SSH3; SSH3L; Protein phosphatase Slingshot homolog 3; SSH-like protein 3; SSH-3L; hSSH-3L

---

Molecular Weight : 74KD

---

## Product Images



Western Blot analysis of various cells using SSH3 Polyclonal Antibody