

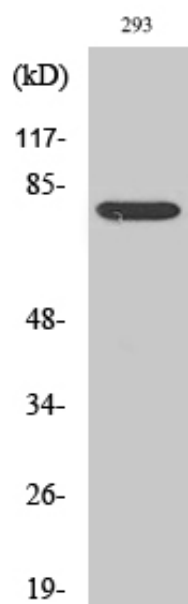
Stat4 Polyclonal Antibody

Catalog_no :	AT4447
Applications :	WB,IHC-p,IP,ELISA
Reactivity :	Human,Mouse,Rat
Category :	抗原抗体
Size :	100µg/50µg/20µg
Gene_name :	STAT4
Protein_name :	Signal transducer and activator of transcription 4
Humangene_id :	6775
Humanswissprot_no :	Q14765
Mousegene_id :	20849
Mouseswissprot_no :	P42228
Immunogen :	The antiserum was produced against synthesized peptide derived from human STAT4. AA range:660-709
Specificity :	Stat4 Polyclonal Antibody detects endogenous levels of Stat4 protein.
Formulation :	Liquid in PBS containing 50% glycerol, 0.5% BSA and 0.02% sodium azide.
Source :	Rabbit
Dilution :	Western Blot: 1/500 - 1/2000. Immunohistochemistry: 1/100 - 1/300. Immunoprecipitation: 2-5 ug/mg lysate. ELISA: 1/5000. Not yet tested in other applications.
Purification :	The antibody was affinity-purified from rabbit antiserum by affinity-chromatography using epitope-specific immunogen.
Concentration :	1 mg/ml
Storage_stability :	-20°C/1 year
Msds :	MSDS_Antibody.pdf
Other_name :	STAT4; Signal transducer and activator of transcription 4
Molecular	85KD



Weight :

Product Images



Western Blot analysis of various cells using Stat4 Polyclonal Antibody